

Product datasheet for TA343121

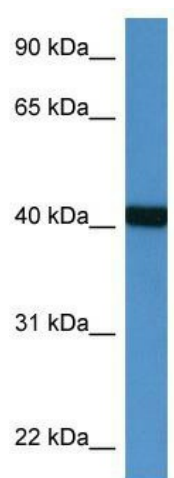
PTER Rabbit Polyclonal Antibody

Product data:

Product Type:	Primary Antibodies
Applications:	WB
Recommended Dilution:	WB
Reactivity:	Human
Host:	Rabbit
Isotype:	IgG
Clonality:	Polyclonal
Immunogen:	The immunogen for anti-PTER antibody: synthetic peptide directed towards the N terminal of human PTER. Synthetic peptide located within the following region: NAYSHKENLQLNQETEAIKEELLYFKANGGGALVENTTTGISRDTQTLKR
Formulation:	Liquid. Purified antibody supplied in 1x PBS buffer with 0.09% (w/v) sodium azide and 2% sucrose. <i>Note that this product is shipped as lyophilized powder to China customers.</i>
Conjugation:	Unconjugated
Storage:	Store at -20°C as received.
Stability:	Stable for 12 months from date of receipt.
Predicted Protein Size:	38 kDa
Gene Name:	phosphotriesterase related
Database Link:	NP_109589 Entrez Gene 9317 Human Q96BW5
Background:	The function of this protein remains unknown.
Synonyms:	HPHRP; RPR-1
Note:	Immunogen Sequence Homology: Pig: 100%; Human: 100%; Mouse: 93%; Dog: 92%; Horse: 92%; Bovine: 92%; Rat: 86%; Rabbit: 85%; Guinea pig



[View online »](#)

Product images:

WB Suggested Anti-PTER Antibody; Titration: 1.0 ug/ml; Positive Control: Fetal Heart