

Product datasheet for **TA343119**

Vitamin D Binding protein (GC) Rabbit Polyclonal Antibody

Product data:

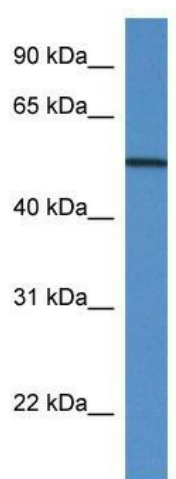
Product Type:	Primary Antibodies
Applications:	WB
Recommended Dilution:	WB
Reactivity:	Human
Host:	Rabbit
Isotype:	IgG
Clonality:	Polyclonal
Immunogen:	The immunogen for anti-GC antibody: synthetic peptide directed towards the N terminal of human GC. Synthetic peptide located within the following region: KHQPQEFPTYVEPTNDEICEAFRKDPKEYANQFMWEYSTNYGQAPLSLLV
Formulation:	Liquid. Purified antibody supplied in 1x PBS buffer with 0.09% (w/v) sodium azide and 2% sucrose. <i>Note that this product is shipped as lyophilized powder to China customers.</i>
Conjugation:	Unconjugated
Storage:	Store at -20°C as received.
Stability:	Stable for 12 months from date of receipt.
Predicted Protein Size:	51 kDa
Gene Name:	GC, vitamin D binding protein
Database Link:	NP_000574 Entrez Gene 2638 Human P02774
Background:	The protein encoded by this gene belongs to the albumin gene family. It is a multifunctional protein found in plasma, ascitic fluid, cerebrospinal fluid and on the surface of many cell types. It binds to vitamin D and its plasma metabolites and transports them to target tissues. Alternatively spliced transcript variants encoding different isoforms have been found for this gene.
Synonyms:	DBP; GC; Gc-MAF; GcMAF; GRD3; HEL-S-51; VDBG; VDBP
Note:	Immunogen Sequence Homology: Human: 100%; Pig: 86%; Rat: 79%; Horse: 79%



[View online »](#)

Protein Families: Secreted Protein

Product images:



WB Suggested Anti-GC Antibody; Titration: 1.0 ug/ml; Positive Control: Placenta