

## Product datasheet for **TA343118**

### Myosin Phosphatase (PPP1R12A) Rabbit Polyclonal Antibody

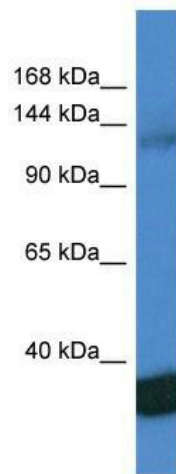
#### Product data:

Product Type:	Primary Antibodies
Applications:	WB
Recommended Dilution:	WB
Reactivity:	Human
Host:	Rabbit
Isotype:	IgG
Clonality:	Polyclonal
Immunogen:	The immunogen for anti-PPP1R12A antibody: synthetic peptide directed towards the C terminal of human PPP1R12A. Synthetic peptide located within the following region: QDSDENEQEQSDTEEGSNKKETQTDSISRYETSSTSAGDRYDSSLGRSG
Formulation:	Liquid. Purified antibody supplied in 1x PBS buffer with 0.09% (w/v) sodium azide and 2% sucrose. <i>Note that this product is shipped as lyophilized powder to China customers.</i>
Conjugation:	Unconjugated
Storage:	Store at -20°C as received.
Stability:	Stable for 12 months from date of receipt.
Predicted Protein Size:	113 kDa
Gene Name:	protein phosphatase 1 regulatory subunit 12A
Database Link:	<a href="#">NP_002471</a> <a href="#">Entrez Gene 4659 Human</a> <a href="#">O14974</a>



[View online »](#)

<b>Background:</b>	Myosin phosphatase target subunit 1, which is also called the myosin-binding subunit of myosin phosphatase, is one of the subunits of myosin phosphatase. Myosin phosphatase regulates the interaction of actin and myosin downstream of the guanosine triphosphatase Rho. The small guanosine triphosphatase Rho is implicated in myosin light chain (MLC) phosphorylation, which results in contraction of smooth muscle and interaction of actin and myosin in nonmuscle cells. The guanosine triphosphate (GTP)-bound, active form of RhoA (GTP.RhoA) specifically interacted with the myosin-binding subunit (MBS) of myosin phosphatase, which regulates the extent of phosphorylation of MLC. Rho-associated kinase (Rho-kinase), which is activated by GTP. RhoA, phosphorylated MBS and consequently inactivated myosin phosphatase.
<b>Synonyms:</b>	M130; MBS; MYPT1
<b>Note:</b>	Immunogen Sequence Homology: Dog: 100%; Pig: 100%; Rat: 100%; Human: 100%; Bovine: 100%; Rabbit: 100%; Guinea pig: 100%; Horse: 93%; Mouse: 86%
<b>Protein Families:</b>	Druggable Genome
<b>Protein Pathways:</b>	Focal adhesion, Long-term potentiation, Regulation of actin cytoskeleton, Vascular smooth muscle contraction

**Product images:**

WB Suggested Anti-PPP1R12A Antibody; Titration: 1.0 ug/ml; Positive Control: Jurkat Whole Cell  
There is BioGPS gene expression data showing that PPP1R12A is expressed in Jurkat