

Product datasheet for TA343116

CDA Rabbit Polyclonal Antibody

Product data:

Product Type:	Primary Antibodies
Applications:	WB
Recommended Dilution:	WB
Reactivity:	Human
Host:	Rabbit
Isotype:	IgG
Clonality:	Polyclonal
Immunogen:	The immunogen for anti-CDA antibody: synthetic peptide directed towards the C terminal of human CDA. Synthetic peptide located within the following region: SPCGACRQVMREFGTNWPVYMTKPDGTYIVMTVQELLPSSFGPEDLQKTQ
Formulation:	Liquid. Purified antibody supplied in 1x PBS buffer with 0.09% (w/v) sodium azide and 2% sucrose. <i>Note that this product is shipped as lyophilized powder to China customers.</i>
Conjugation:	Unconjugated
Storage:	Store at -20°C as received.
Stability:	Stable for 12 months from date of receipt.
Predicted Protein Size:	16 kDa
Gene Name:	cytidine deaminase
Database Link:	NP_001776 Entrez Gene 978 Human P32320
Background:	This gene encodes an enzyme involved in pyrimidine salvaging. The encoded protein forms a homotetramer that catalyzes the irreversible hydrolytic deamination of cytidine and deoxycytidine to uridine and deoxyuridine, respectively. It is one of several deaminases responsible for maintaining the cellular pyrimidine pool. Mutations in this gene are associated with decreased sensitivity to the cytosine nucleoside analogue cytosine arabinoside used in the treatment of certain childhood leukemias.
Synonyms:	CDD



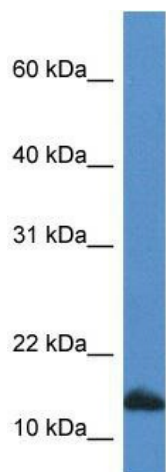
[View online »](#)

Note: Immunogen Sequence Homology: Human: 100%; Pig: 92%; Rat: 92%; Guinea pig: 92%; Zebrafish: 90%; Mouse: 86%; Bovine: 86%; Horse: 83%; Yeast: 83%

Protein Families: Stem cell - Pluripotency

Protein Pathways: Drug metabolism - other enzymes, Metabolic pathways, Pyrimidine metabolism

Product images:



WB Suggested Anti-CDA Antibody; Titration: 1.0 ug/ml; Positive Control: HepG2 Whole Cell