

Product datasheet for **TA343114**

Syntaxin 8 (STX8) Rabbit Polyclonal Antibody

Product data:

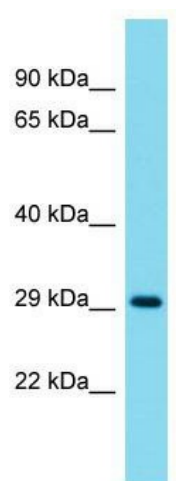
Product Type:	Primary Antibodies
Applications:	WB
Recommended Dilution:	WB
Reactivity:	Mouse
Host:	Rabbit
Isotype:	IgG
Clonality:	Polyclonal
Immunogen:	The immunogen for anti-Stx8 antibody is: synthetic peptide directed towards the C-terminal region of Mouse Stx8. Synthetic peptide located within the following region: IISRQKQMGQEIGNELDEQNEIIDDLANLVENTDEKLRTEARRVTLVDRK
Formulation:	Liquid. Purified antibody supplied in 1x PBS buffer with 0.09% (w/v) sodium azide and 2% sucrose. <i>Note that this product is shipped as lyophilized powder to China customers.</i>
Conjugation:	Unconjugated
Storage:	Store at -20°C as received.
Stability:	Stable for 12 months from date of receipt.
Predicted Protein Size:	27 kDa
Gene Name:	syntaxin 8
Database Link:	NP_004844 Entrez Gene 55943 Mouse Q9UNK0
Background:	Stx8 is a vesicle trafficking protein that functions in the early secretory pathway, possibly by mediating retrograde transport from cis-Golgi membranes to the ER.
Synonyms:	CARB
Note:	Immunogen Sequence Homology: Human: 100%; Pig: 93%; Bovine: 93%; Guinea pig: 93%; Dog: 86%; Rat: 86%; Mouse: 86%
Protein Families:	Druggable Genome, Transmembrane



[View online »](#)

Protein Pathways: SNARE interactions in vesicular transport

Product images:



Host: Rabbit; Target Name: Stx8; Sample Tissue: Mouse Liver lysates; Antibody Dilution: 1.0 ug/ml