

Product datasheet for **TA343113**

Syntaxin 7 (STX7) Rabbit Polyclonal Antibody

Product data:

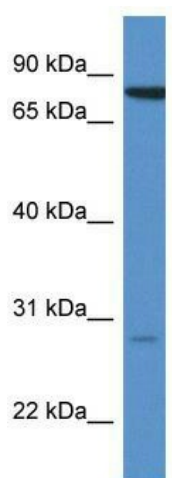
Product Type:	Primary Antibodies
Applications:	WB
Recommended Dilution:	WB
Reactivity:	Human
Host:	Rabbit
Isotype:	IgG
Clonality:	Polyclonal
Immunogen:	The immunogen for anti-STX7 antibody: synthetic peptide directed towards the N terminal of human STX7. Synthetic peptide located within the following region: PSEQRQRKIQKDLVAEFTTSLTNFQVQRQAAEREKEFVARVRASSRVS
Formulation:	Liquid. Purified antibody supplied in 1x PBS buffer with 0.09% (w/v) sodium azide and 2% sucrose. <i>Note that this product is shipped as lyophilized powder to China customers.</i>
Conjugation:	Unconjugated
Storage:	Store at -20°C as received.
Stability:	Stable for 12 months from date of receipt.
Predicted Protein Size:	30 kDa
Gene Name:	syntaxin 7
Database Link:	NP_003560 Entrez Gene 8417 Human O15400
Background:	STX7 may be involved in protein trafficking from the plasma membrane to the early endosome (EE) as well as in homotypic fusion of endocytic organelles. STX7 mediates the endocytic trafficking from early endosomes to late endosomes and lysosomes.
Synonyms:	OTTHUMP00000017219; OTTHUMP00000017221; syntaxin 7
Note:	Immunogen Sequence Homology: Pig: 100%; Rat: 100%; Human: 100%; Bovine: 100%; Rabbit: 100%; Guinea pig: 100%; Dog: 93%; Horse: 93%; Mouse: 93%; Zebrafish: 86%
Protein Families:	Druggable Genome, Transmembrane



[View online »](#)

Protein Pathways: SNARE interactions in vesicular transport

Product images:



WB Suggested Anti-STX7 Antibody; Titration: 1.0 ug/ml; Positive Control: 721_B Whole Cell STX7 is strongly supported by BioGPS gene expression data to be expressed in Human 721_B cells