

Product datasheet for **TA343112**

GABA B Receptor 2 (GABBR2) Rabbit Polyclonal Antibody

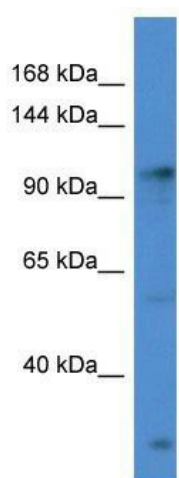
Product data:

Product Type:	Primary Antibodies
Applications:	WB
Recommended Dilution:	WB
Reactivity:	Human
Host:	Rabbit
Isotype:	IgG
Clonality:	Polyclonal
Immunogen:	The immunogen for anti-GABBR2 antibody: synthetic peptide directed towards the C terminal of human GABBR2. Synthetic peptide located within the following region: QFTQNQKKEDSKTSTSVTSVNQASTSRLEGLQSENHRLRMKITELDKDLE
Formulation:	Liquid. Purified antibody supplied in 1x PBS buffer with 0.09% (w/v) sodium azide and 2% sucrose. <i>Note that this product is shipped as lyophilized powder to China customers.</i>
Conjugation:	Unconjugated
Storage:	Store at -20°C as received.
Stability:	Stable for 12 months from date of receipt.
Predicted Protein Size:	106 kDa
Gene Name:	gamma-aminobutyric acid type B receptor subunit 2
Database Link:	NP_005449 Entrez Gene 9568 Human O75899
Background:	The multi-pass membrane protein encoded by this gene belongs to the G-protein coupled receptor 3 family and GABA-B receptor subfamily. The GABA-B receptors inhibit neuronal activity through G protein-coupled second-messenger systems, which regulate the release of neurotransmitters, and the activity of ion channels and adenylyl cyclase. This receptor subunit forms an active heterodimeric complex with GABA-B receptor subunit 1, neither of which is effective on its own. Allelic variants of this gene have been associated with nicotine dependence.



[View online »](#)

Synonyms:	GABABR2; GPR51; GPRC3B; HG20; HRIHFB2099
Note:	Immunogen Sequence Homology: Dog: 100%; Pig: 100%; Rat: 100%; Horse: 100%; Human: 100%; Mouse: 100%; Bovine: 100%; Rabbit: 100%; Zebrafish: 100%; Guinea pig: 93%
Protein Families:	Druggable Genome, GPCR, Transmembrane
Protein Pathways:	Neuroactive ligand-receptor interaction

Product images:

WB Suggested Anti-GABBR2 Antibody; Titration: 1.0 ug/ml; Positive Control: Hela Whole Cell