

Product datasheet for **TA343111**

Superoxide Dismutase 1 (SOD1) Rabbit Polyclonal Antibody

Product data:

Product Type:	Primary Antibodies
Applications:	WB
Recommended Dilution:	WB
Reactivity:	Human, Mouse
Host:	Rabbit
Isotype:	IgG
Clonality:	Polyclonal
Immunogen:	The immunogen for anti-SOD1 antibody is: synthetic peptide directed towards the C-terminal region of Human SOD1. Synthetic peptide located within the following region: DVSIEDSVISLSGDHCCIIGRTLHVHEKADDLGKGGNEESTKTGNAGSRLA
Formulation:	Liquid. Purified antibody supplied in 1x PBS buffer with 0.09% (w/v) sodium azide and 2% sucrose. <i>Note that this product is shipped as lyophilized powder to China customers.</i>
Conjugation:	Unconjugated
Storage:	Store at -20°C as received.
Stability:	Stable for 12 months from date of receipt.
Predicted Protein Size:	17 kDa
Gene Name:	superoxide dismutase 1, soluble
Database Link:	NP_000445 Entrez Gene 20655 Mouse Entrez Gene 6647 Human P00441
Background:	SOD1 binds copper and zinc ions and is one of two isozymes responsible for destroying free superoxide radicals in the body. This isozyme is a soluble cytoplasmic protein, acting as a homodimer to convert naturally-occurring but harmful superoxide radicals to molecular oxygen and hydrogen peroxide. The other isozyme is a mitochondrial protein. Mutations in its gene have been implicated as causes of familial amyotrophic lateral sclerosis.
Synonyms:	ALS; ALS1; HEL-S-44; homodimer; hSod1; IPOA; SOD



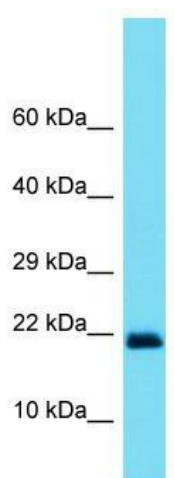
[View online »](#)

Note: Immunogen Sequence Homology: Pig: 100%; Rat: 100%; Goat: 100%; Horse: 100%; Human: 100%; Mouse: 100%; Sheep: 100%; Yeast: 100%; Bovine: 100%; Guinea pig: 100%; Rabbit: 93%; Zebrafish: 92%; Dog: 86%

Protein Families: Druggable Genome

Protein Pathways: Amyotrophic lateral sclerosis (ALS), Huntington's disease, Prion diseases

Product images:



Host: Rabbit; Target Name: SOD1; Sample Tissue: Placenta lysates; Antibody Dilution: 1.0 ug/ml