

## Product datasheet for **TA343110**

### Lysosomal acid lipase (LIPA) Rabbit Polyclonal Antibody

#### Product data:

Product Type:	Primary Antibodies
Applications:	WB
Recommended Dilution:	WB
Reactivity:	Human
Host:	Rabbit
Isotype:	IgG
Clonality:	Polyclonal
Immunogen:	The immunogen for anti-LIPA antibody: synthetic peptide directed towards the N terminal of human LIPA. Synthetic peptide located within the following region: SYWGFPSSEYLVETEDGYILCLNRIPHGRKNHSDKGPVFLQHGLLAD
Formulation:	Liquid. Purified antibody supplied in 1x PBS buffer with 0.09% (w/v) sodium azide and 2% sucrose. <i>Note that this product is shipped as lyophilized powder to China customers.</i>
Conjugation:	Unconjugated
Storage:	Store at -20°C as received.
Stability:	Stable for 12 months from date of receipt.
Predicted Protein Size:	43 kDa
Gene Name:	lipase A, lysosomal acid type
Database Link:	<a href="#">NP_000226</a> <a href="#">Entrez Gene 3988 Human P38571</a>
Background:	This gene encodes lipase A, the lysosomal acid lipase (also known as cholesterol ester hydrolase). This enzyme functions in the lysosome to catalyze the hydrolysis of cholesteryl esters and triglycerides. Mutations in this gene can result in Wolman disease and cholesteryl ester storage disease. Alternatively spliced transcript variants encoding the same protein have been found for this gene.
Synonyms:	CESD; LAL



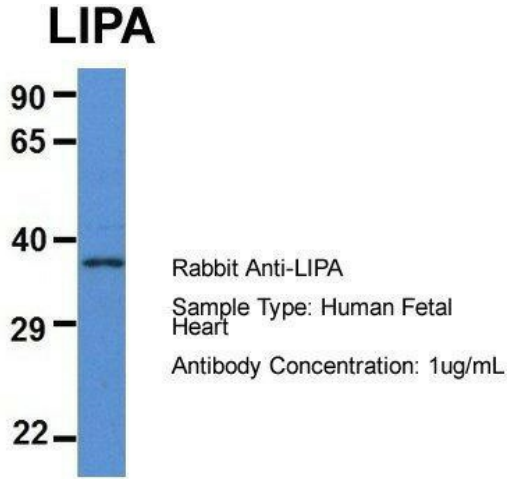
[View online »](#)

**Note:** Immunogen Sequence Homology: Pig: 100%; Human: 100%; Sheep: 93%; Bovine: 93%; Rabbit: 93%; Rat: 86%; Horse: 86%

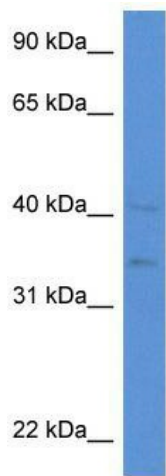
**Protein Families:** Druggable Genome

**Protein Pathways:** Lysosome, Steroid biosynthesis

**Product images:**



Host: Rabbit; Target Name: LIPA; Sample Tissue: Human Fetal Heart; Antibody Dilution: 1.0 ug/ml



WB Suggested Anti-LIPA Antibody; Titration: 1.0 ug/ml; Positive Control: HepG2 Whole Cell LIPA is supported by BioGPS gene expression data to be expressed in HepG2