

## Product datasheet for **TA343109**

### TPR Rabbit Polyclonal Antibody

#### Product data:

Product Type:	Primary Antibodies
Applications:	WB
Recommended Dilution:	WB
Reactivity:	Human
Host:	Rabbit
Isotype:	IgG
Clonality:	Polyclonal
Immunogen:	The immunogen for anti-TPR antibody: synthetic peptide directed towards the C terminal of human TPR. Synthetic peptide located within the following region: SQNSGEGNTGAAESSFSQEVSREQQPSSASERQAPRAPQSPRRPPHPLPP
Formulation:	Liquid. Purified antibody supplied in 1x PBS buffer with 0.09% (w/v) sodium azide and 2% sucrose.
Conjugation:	Unconjugated
Storage:	Store at -20°C as received.
Stability:	Stable for 12 months from date of receipt.
Predicted Protein Size:	267 kDa
Gene Name:	translocated promoter region, nuclear basket protein
Database Link:	<a href="#">NP_003283</a> <a href="#">Entrez Gene 7175 Human</a> <a href="#">P12270</a>
Background:	This gene encodes a large coiled-coil protein that forms intranuclear filaments attached to the inner surface of nuclear pore complexes (NPCs). The protein directly interacts with several components of the NPC. It is required for the nuclear export of mRNAs and some proteins. Oncogenic fusions of the 5' end of this gene with several different kinase genes occur in some neoplasias.
Synonyms:	nuclear pore complex-associated protein TPR; nucleoprotein TPR; OTTHUMP00000033584; translocated promoter region (to activated MET oncogene); tumor potentiating region

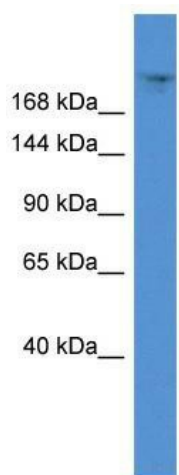


[View online »](#)

**Note:** Immunogen Sequence Homology: Dog: 100%; Pig: 100%; Horse: 100%; Human: 100%; Bovine: 100%; Rabbit: 100%; Guinea pig: 100%; Rat: 92%; Mouse: 92%

**Protein Pathways:** Pathways in cancer, Thyroid cancer

**Product images:**



WB Suggested Anti-TPR Antibody; Titration: 1.0 ug/ml; Positive Control: 721\_B Whole Cell TPR is strongly supported by BioGPS gene expression data to be expressed in Human 721\_B cells