

Product datasheet for **TA343106**

Vinculin (VCL) Rabbit Polyclonal Antibody

Product data:

Product Type:	Primary Antibodies
Applications:	WB
Recommended Dilution:	WB
Reactivity:	Human
Host:	Rabbit
Isotype:	IgG
Clonality:	Polyclonal
Immunogen:	The immunogen for anti-VCL antibody: synthetic peptide directed towards the C terminal of human VCL. Synthetic peptide located within the following region: PRPPPPEEKDEEFPEQKAGEVINQPMMAARQLHDEARKWSSKGNIIAA
Formulation:	Liquid. Purified antibody supplied in 1x PBS buffer with 0.09% (w/v) sodium azide and 2% sucrose. <i>Note that this product is shipped as lyophilized powder to China customers.</i>
Conjugation:	Unconjugated
Storage:	Store at -20°C as received.
Stability:	Stable for 12 months from date of receipt.
Predicted Protein Size:	117 kDa
Gene Name:	vinculin
Database Link:	NP_003364 Entrez Gene 7414 Human P18206
Background:	Vinculin is a cytoskeletal protein associated with cell-cell and cell-matrix junctions, where it is thought to function as one of several interacting proteins involved in anchoring F-actin to the membrane. Defects in VCL are the cause of cardiomyopathy dilated type 1W. Dilated cardiomyopathy is a disorder characterized by ventricular dilation and impaired systolic function, resulting in congestive heart failure and arrhythmia. Multiple alternatively spliced transcript variants have been found for this gene, but the biological validity of some variants has not been determined.



[View online »](#)

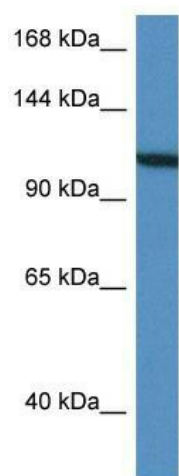
Synonyms: CMD1W; CMH15; HEL114; MV; MVCL

Note: Immunogen Sequence Homology: Dog: 100%; Pig: 100%; Rat: 100%; Horse: 100%; Human: 100%; Mouse: 100%; Bovine: 100%; Rabbit: 100%; Zebrafish: 100%; Guinea pig: 100%

Protein Families: Druggable Genome

Protein Pathways: Adherens junction, Focal adhesion, Leukocyte transendothelial migration, Regulation of actin cytoskeleton

Product images:



WB Suggested Anti-VCL Antibody; Titration: 1.0 ug/ml; Positive Control: HepG2 Whole Cell