

Product datasheet for **TA343102**

Glucose 6 phosphate isomerase (GPI) Rabbit Polyclonal Antibody

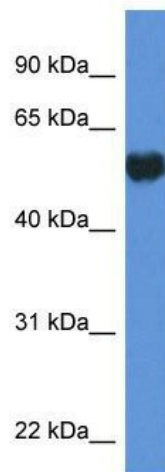
Product data:

Product Type:	Primary Antibodies
Applications:	WB
Recommended Dilution:	WB
Reactivity:	Human
Host:	Rabbit
Isotype:	IgG
Clonality:	Polyclonal
Immunogen:	The immunogen for anti-GPI antibody: synthetic peptide directed towards the C terminal of human GPI. Synthetic peptide located within the following region: SFDQWGVELGKQLAKKIEPELDGSAQVTSHDASTNGLINFIKQQRARVQ
Formulation:	Liquid. Purified antibody supplied in 1x PBS buffer with 0.09% (w/v) sodium azide and 2% sucrose. <i>Note that this product is shipped as lyophilized powder to China customers.</i>
Conjugation:	Unconjugated
Storage:	Store at -20°C as received.
Stability:	Stable for 12 months from date of receipt.
Predicted Protein Size:	63 kDa
Gene Name:	glucose-6-phosphate isomerase
Database Link:	NP_000166 Entrez Gene 2821 Human P06744



[View online »](#)

Background:	This gene belongs to the GPI family whose members encode multifunctional phosphoglucose isomerase proteins involved in energy pathways. The protein encoded by this gene is a dimeric enzyme that catalyzes the reversible isomerization of glucose-6-phosphate and fructose-6-phosphate. The protein functions in different capacities inside and outside the cell. In the cytoplasm, the gene product is involved in glycolysis and gluconeogenesis, while outside the cell it functions as a neurotrophic factor for spinal and sensory neurons. Defects in this gene are the cause of nonspherocytic hemolytic anemia and a severe enzyme deficiency can be associated with hydrops fetalis, immediate neonatal death and neurological impairment.
Synonyms:	AMF; GNPI; NLK; PGI; PHI; SA-36; SA36
Note:	Immunogen Sequence Homology: Pig: 100%; Rat: 100%; Human: 100%; Guinea pig: 100%; Bovine: 92%; Dog: 86%; Rabbit: 86%
Protein Families:	Druggable Genome
Protein Pathways:	Amino sugar and nucleotide sugar metabolism, Glycolysis / Gluconeogenesis, Metabolic pathways, Pentose phosphate pathway, Starch and sucrose metabolism

Product images:

WB Suggested Anti-GPI Antibody; Titration: 1.0 ug/ml; Positive Control: HepG2 Whole Cell