

Product datasheet for **TA343097**

LHCGR Rabbit Polyclonal Antibody

Product data:

Product Type:	Primary Antibodies
Applications:	WB
Recommended Dilution:	WB
Reactivity:	Human
Host:	Rabbit
Isotype:	IgG
Clonality:	Polyclonal
Immunogen:	The immunogen for anti-LHCGR antibody is: synthetic peptide directed towards the C-terminal region of Human LHCGR. Synthetic peptide located within the following region: LLLSKFGCKRRAELYRRKDFSAYTSNCKNGFTGSNKPSQSTLKLSTLHC
Formulation:	Liquid. Purified antibody supplied in 1x PBS buffer with 0.09% (w/v) sodium azide and 2% sucrose. <i>Note that this product is shipped as lyophilized powder to China customers.</i>
Purification:	Affinity Purified
Conjugation:	Unconjugated
Storage:	Store at -20°C as received.
Stability:	Stable for 12 months from date of receipt.
Predicted Protein Size:	69 kDa
Gene Name:	luteinizing hormone/choriogonadotropin receptor
Database Link:	NP_000224 Entrez Gene 3973 Human P22888
Background:	This gene encodes the receptor for both luteinizing hormone and choriogonadotropin. This receptor belongs to the G-protein coupled receptor 1 family, and its activity is mediated by G proteins which activate adenylate cyclase. Mutations in this gene result in disorders of male secondary sexual character development, including familial male precocious puberty, also known as testotoxicosis, hypogonadotropic hypogonadism, Leydig cell adenoma with precocious puberty, and male pseudohermaphroditism with Leydig cell hypoplasia.



[View online »](#)

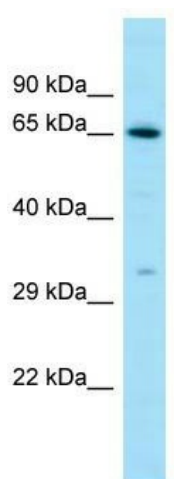
Synonyms: CG-R; CGR; HHG; LCGR; LGR2; LH; LHR; LHRHR; LSH-R; ULG5

Note: Immunogen Sequence Homology: Dog: 100%; Human: 100%; Pig: 93%; Goat: 93%; Bovine: 93%; Rat: 86%; Horse: 86%; Rabbit: 86%; Guinea pig: 86%

Protein Families: Druggable Genome, Transmembrane

Protein Pathways: Calcium signaling pathway, Neuroactive ligand-receptor interaction

Product images:



Host: Rabbit; Target Name: LHCGR; Sample
Tissue: THP-1 whole cell lysates; Antibody
Dilution: 1.0 ug/ml