

Product datasheet for **TA343096**

CHRM1 Rabbit Polyclonal Antibody

Product data:

Product Type:	Primary Antibodies
Applications:	WB
Recommended Dilution:	WB
Reactivity:	Human
Host:	Rabbit
Isotype:	IgG
Clonality:	Polyclonal
Immunogen:	The immunogen for anti-CHRM1 antibody is: synthetic peptide directed towards the C-terminal region of Human CHRM1. Synthetic peptide located within the following region: VKRPTKKGRDRAGKGQKPRGKEQLAKRKTFSLVKEKKAARTLSAILLAFI
Formulation:	Liquid. Purified antibody supplied in 1x PBS buffer with 0.09% (w/v) sodium azide and 2% sucrose. <i>Note that this product is shipped as lyophilized powder to China customers.</i>
Conjugation:	Unconjugated
Storage:	Store at -20°C as received.
Stability:	Stable for 12 months from date of receipt.
Predicted Protein Size:	51 kDa
Gene Name:	cholinergic receptor muscarinic 1
Database Link:	NP_000729 Entrez Gene 1128 Human P11229
Background:	The muscarinic cholinergic receptors belong to a larger family of G protein-coupled receptors. The functional diversity of these receptors is defined by the binding of acetylcholine and includes cellular responses such as adenylate cyclase inhibition, phosphoinositide degeneration, and potassium channel mediation. Muscarinic receptors influence many effects of acetylcholine in the central and peripheral nervous system. The muscarinic cholinergic receptor 1 is involved in mediation of vagally-induced bronchoconstriction and in the acid secretion of the gastrointestinal tract. The gene encoding this receptor is localized to 11q13.



[View online »](#)

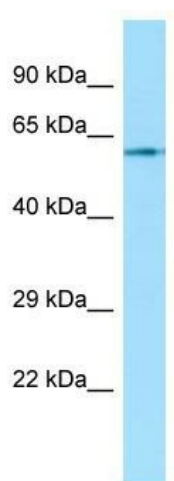
Synonyms: HM1; M1; M1R

Note: Immunogen Sequence Homology: Pig: 100%; Human: 100%; Guinea pig: 100%; Rat: 93%; Mouse: 93%; Bovine: 93%; Rabbit: 93%; Dog: 86%; Horse: 86%

Protein Families: Druggable Genome, GPCR, Transmembrane

Protein Pathways: Calcium signaling pathway, Neuroactive ligand-receptor interaction, Regulation of actin cytoskeleton

Product images:



WB Suggested Anti-CHRM1 Antibody; Titration: 1.0 ug/ml; Positive Control: Fetal Bladder