

## Product datasheet for **TA343095**

### Protease Inhibitor 15 (PI15) Rabbit Polyclonal Antibody

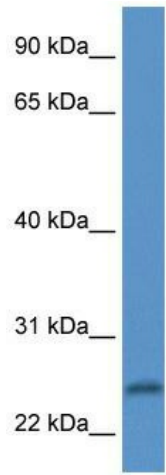
#### Product data:

Product Type:	Primary Antibodies
Applications:	WB
Recommended Dilution:	WB
Reactivity:	Human
Host:	Rabbit
Isotype:	IgG
Clonality:	Polyclonal
Immunogen:	The immunogen for anti-PI15 antibody: synthetic peptide directed towards the N terminal of human PI15. Synthetic peptide located within the following region: PPTNNFTDIEAALKAQLDSADIPKARRKRYISQNDMIAILDYHNQVRGKV
Formulation:	Liquid. Purified antibody supplied in 1x PBS buffer with 0.09% (w/v) sodium azide and 2% sucrose. <i>Note that this product is shipped as lyophilized powder to China customers.</i>
Conjugation:	Unconjugated
Storage:	Store at -20°C as received.
Stability:	Stable for 12 months from date of receipt.
Predicted Protein Size:	23 kDa
Gene Name:	peptidase inhibitor 15
Database Link:	<a href="#">NP_056970</a> <a href="#">Entrez Gene 51050 Human</a> <a href="#">O43692</a>
Background:	This gene encodes a trypsin inhibitor. The protein shares similarity to insect venom allergens, mammalian testis-specific proteins and plant pathogenesis-related proteins. It is frequently expressed in human neuroblastoma and glioblastoma cell lines, and thus may play a role in the central nervous system.
Synonyms:	CRISP8; P24TI; P25TI
Note:	Immunogen Sequence Homology: Pig: 100%; Rat: 100%; Horse: 100%; Human: 100%; Mouse: 100%; Guinea pig: 100%; Dog: 93%; Bovine: 93%; Rabbit: 93%; Zebrafish: 91%



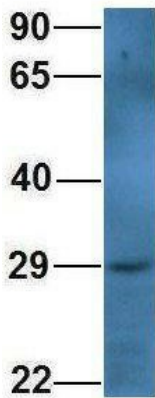
[View online >](#)

Product images:



WB Suggested Anti-PI15 Antibody; Titration: 1.0 ug/ml; Positive Control: Fetal Heart

**PI15**



Rabbit Anti-PI15  
Sample Type: Human Fetal Brain  
Antibody Concentration: 1ug/mL

Host: Rabbit; Target Name: PI15; Sample Tissue: Human Fetal Brain; Antibody Dilution: 1.0 ug/ml