

Product datasheet for **TA343094**

CCS Rabbit Polyclonal Antibody

Product data:

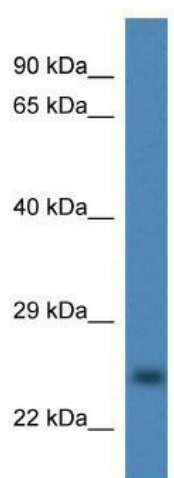
Product Type:	Primary Antibodies
Applications:	WB
Recommended Dilution:	WB
Reactivity:	Human
Host:	Rabbit
Isotype:	IgG
Clonality:	Polyclonal
Immunogen:	The immunogen for anti-CCS antibody: synthetic peptide directed towards the middle region of human CCS. Synthetic peptide located within the following region: LHGLHVHQYGDLTNNCNSCGNHFNPDGASHGGPQSDRHRGDLGNVRADA
Formulation:	Liquid. Purified antibody supplied in 1x PBS buffer with 0.09% (w/v) sodium azide and 2% sucrose. <i>Note that this product is shipped as lyophilized powder to China customers.</i>
Conjugation:	Unconjugated
Storage:	Store at -20°C as received.
Stability:	Stable for 12 months from date of receipt.
Predicted Protein Size:	29 kDa
Gene Name:	copper chaperone for superoxide dismutase
Database Link:	NP_005116 Entrez Gene 9973 Human O14618
Background:	Copper chaperone for superoxide dismutase specifically delivers Cu to copper/zinc superoxide dismutase and may activate copper/zinc superoxide dismutase through direct insertion of the Cu cofactor.
Synonyms:	MGC138260
Note:	Immunogen Sequence Homology: Pig: 100%; Human: 100%; Rabbit: 100%; Dog: 93%; Rat: 93%; Mouse: 93%; Horse: 92%; Sheep: 92%; Bovine: 92%; Guinea pig: 92%; Zebrafish: 90%
Protein Families:	Druggable Genome



[View online »](#)

Protein Pathways: Amyotrophic lateral sclerosis (ALS)

Product images:



WB Suggested Anti-CCS Antibody; Titration: 1.0 ug/ml; Positive Control: Fetal Liver