

## Product datasheet for **TA343093**

### H3FA (HIST1H3A) Rabbit Polyclonal Antibody

#### Product data:

Product Type:	Primary Antibodies
Applications:	WB
Recommended Dilution:	WB
Reactivity:	Human
Host:	Rabbit
Isotype:	IgG
Clonality:	Polyclonal
Immunogen:	The immunogen for anti-HIST1H3A antibody: synthetic peptide directed towards the N terminal of human HIST1H3A. Synthetic peptide located within the following region: KQTARKSTGGKAPRKQLATKAARKSAPATGGVKKPHRYRPGTVALREIRR
Formulation:	Liquid. Purified antibody supplied in 1x PBS buffer with 0.09% (w/v) sodium azide and 2% sucrose. <i>Note that this product is shipped as lyophilized powder to China customers.</i>
Conjugation:	Unconjugated
Storage:	Store at -20°C as received.
Stability:	Stable for 12 months from date of receipt.
Predicted Protein Size:	15 kDa
Gene Name:	histone cluster 1, H3a
Database Link:	<a href="#">NP_003520</a> <a href="#">Entrez Gene 8350 Human</a> <a href="#">P68431</a>



[View online »](#)

**Background:**

Histones are basic nuclear proteins that are responsible for the nucleosome structure of the chromosomal fiber in eukaryotes. This structure consists of approximately 146 bp of DNA wrapped around a nucleosome, an octamer composed of pairs of each of the four core histones (H2A, H2B, H3, and H4). The chromatin fiber is further compacted through the interaction of a linker histone, H1, with the DNA between the nucleosomes to form higher order chromatin structures. This gene is intronless and encodes a member of the histone H3 family. Transcripts from this gene lack polyA tails; instead, they contain a palindromic termination element. This gene is found in the large histone gene cluster on chromosome 6p22-p21.3.

**Synonyms:**

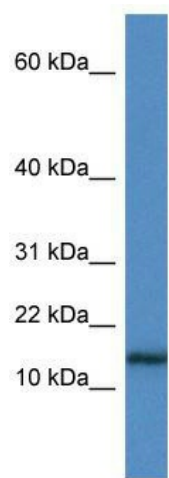
A; H3; H3FA

**Note:**

Immunogen Sequence Homology: Pig: 100%; Rat: 100%; Human: 100%; Mouse: 100%; Yeast: 100%; Zebrafish: 100%

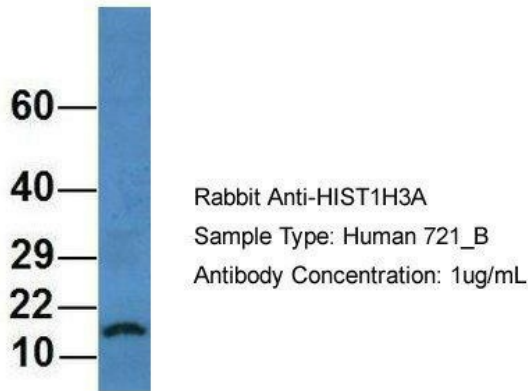
**Protein Pathways:**

Systemic lupus erythematosus

**Product images:**

WB Suggested Anti-HIST1H3A Antibody; Titration: 1.0 ug/ml; Positive Control: Jurkat Whole Cell

## HIST1H3A



Host: Rabbit; Target Name: HIST1H3A; Sample Tissue: Human 721\_B; Antibody Dilution: 1.0 ug/ml HIST1H3A is supported by BioGPS gene expression data to be expressed in 721\_B