

Product datasheet for **TA343092**

Trypsin (PRSS1) Rabbit Polyclonal Antibody

Product data:

Product Type:	Primary Antibodies
Applications:	WB
Recommended Dilution:	WB
Reactivity:	Human
Host:	Rabbit
Isotype:	IgG
Clonality:	Polyclonal
Immunogen:	The immunogen for anti-PRSS1 antibody: synthetic peptide directed towards the N terminal of human PRSS1. Synthetic peptide located within the following region: LILTFVAAALAAPFDDDDKIVGGYNCEENSVPYQVSLNSGYHFCGSLIN
Formulation:	Liquid. Purified antibody supplied in 1x PBS buffer with 0.09% (w/v) sodium azide and 2% sucrose. <i>Note that this product is shipped as lyophilized powder to China customers.</i>
Conjugation:	Unconjugated
Storage:	Store at -20°C as received.
Stability:	Stable for 12 months from date of receipt.
Predicted Protein Size:	24 kDa
Gene Name:	protease, serine 1
Database Link:	NP_002760 Entrez Gene 5644 Human P07477
Background:	This gene encodes a trypsinogen, which is a member of the trypsin family of serine proteases. This enzyme is secreted by the pancreas and cleaved to its active form in the small intestine. It is active on peptide linkages involving the carboxyl group of lysine or arginine. Mutations in this gene are associated with hereditary pancreatitis. This gene and several other trypsinogen genes are localized to the T cell receptor beta locus on chromosome 7.
Synonyms:	TRP1; TRY1; TRY4; TRYP1



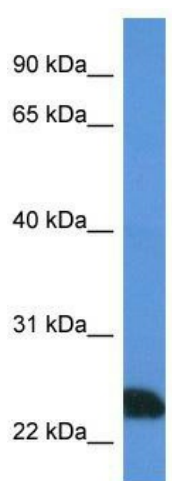
[View online »](#)

Note: Immunogen Sequence Homology: Human: 100%; Dog: 93%; Rat: 86%; Horse: 86%; Mouse: 86%; Bovine: 86%; Pig: 79%; Rabbit: 79%; Zebrafish

Protein Families: Druggable Genome, Secreted Protein

Protein Pathways: Neuroactive ligand-receptor interaction

Product images:



WB Suggested Anti-PRSS1 Antibody; Titration: 1.0 ug/ml; Positive Control: Jurkat Whole Cell