

Product datasheet for **TA343084**

DGCR6L Rabbit Polyclonal Antibody

Product data:

Product Type:	Primary Antibodies
Applications:	WB
Recommended Dilution:	WB
Reactivity:	Human
Host:	Rabbit
Isotype:	IgG
Clonality:	Polyclonal
Immunogen:	The immunogen for anti-DGCR6L antibody: synthetic peptide directed towards the C terminal of human DGCR6L. Synthetic peptide located within the following region: QQRELEAVEHRIREEQRAMDQKIILELDRKVADQQSTLEKAGVAGFYVTT
Formulation:	Liquid. Purified antibody supplied in 1x PBS buffer with 0.09% (w/v) sodium azide and 2% sucrose. <i>Note that this product is shipped as lyophilized powder to China customers.</i>
Conjugation:	Unconjugated
Storage:	Store at -20°C as received.
Stability:	Stable for 12 months from date of receipt.
Predicted Protein Size:	25 kDa
Gene Name:	DiGeorge syndrome critical region gene 6-like
Database Link:	NP_150282 Entrez Gene 85359 Human Q9BY27
Background:	This gene, the result of a duplication at this locus, is one of two functional genes encoding nearly identical proteins that have similar expression patterns. The product of this gene is a protein that shares homology with the Drosophila gonadal protein, expressed in gonadal tissues and germ cells, and with the human laminin gamma-1 chain that functions in cell attachment and migration. This gene is located in a region of chromosome 22 implicated in the DiGeorge syndrome, one facet of a broader collection of anomalies referred to as the CATCH 22 syndrome.



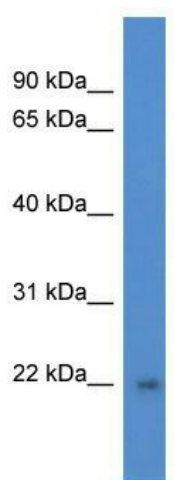
[View online »](#)

Synonyms: DGCR6

Note: Immunogen Sequence Homology: Dog: 100%; Pig: 100%; Rat: 100%; Horse: 100%; Human: 100%; Mouse: 100%; Bovine: 100%; Rabbit: 100%; Guinea pig: 100%

Protein Families: Druggable Genome, Transcription Factors

Product images:



WB Suggested Anti-DGCR6L Antibody; Titration: 1.0 ug/ml; Positive Control: Fetal Brain