

## Product datasheet for **TA343081**

### ATCAY Rabbit Polyclonal Antibody

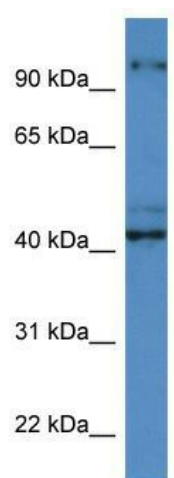
#### Product data:

Product Type:	Primary Antibodies
Applications:	WB
Recommended Dilution:	WB
Reactivity:	Human
Host:	Rabbit
Isotype:	IgG
Clonality:	Polyclonal
Immunogen:	The immunogen for anti-ATCAY antibody: synthetic peptide directed towards the C terminal of human ATCAY. Synthetic peptide located within the following region: LIPMEHVQIPDCVLQYEEERLKARRESARPQPEFVLP RSEEKPEVAPVEN
Formulation:	Liquid. Purified antibody supplied in 1x PBS buffer with 0.09% (w/v) sodium azide and 2% sucrose. <i>Note that this product is shipped as lyophilized powder to China customers.</i>
Conjugation:	Unconjugated
Storage:	Store at -20°C as received.
Stability:	Stable for 12 months from date of receipt.
Predicted Protein Size:	42 kDa
Gene Name:	ataxia, cerebellar, Cayman type
Database Link:	<a href="#">NP_149053</a> <a href="#">Entrez Gene 85300 Human</a> <a href="#">Q86WG3</a>
Background:	This gene encodes a neuron-restricted protein that contains a CRAL-TRIO motif common to proteins that bind small lipophilic molecules. Mutations in this gene are associated with cerebellar ataxia, Cayman type.
Synonyms:	BNIP-H; CLAC
Note:	Immunogen Sequence Homology: Pig: 100%; Horse: 100%; Human: 100%; Yeast: 100%; Bovine: 100%; Dog: 93%; Rat: 93%; Guinea pig: 79%
Protein Families:	Transmembrane



[View online »](#)

## Product images:



WB Suggested Anti-ATCAY Antibody; Titration: 1.0 ug/ml; Positive Control: ACHN Whole Cell