

Product datasheet for **TA343080**

SF3B5 Rabbit Polyclonal Antibody

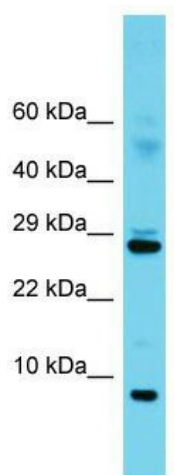
Product data:

Product Type:	Primary Antibodies
Applications:	WB
Recommended Dilution:	WB
Reactivity:	Mouse
Host:	Rabbit
Isotype:	IgG
Clonality:	Polyclonal
Immunogen:	The immunogen for anti-Sf3b5 antibody is: synthetic peptide directed towards the C-terminal region of Mouse Sf3b5. Synthetic peptide located within the following region: RDSYCSYMGHFDLLNYFAIAENESKARVRFNLMKMLQPSGPPADKPEEN
Formulation:	Liquid. Purified antibody supplied in 1x PBS buffer with 0.09% (w/v) sodium azide and 2% sucrose. <i>Note that this product is shipped as lyophilized powder to China customers.</i>
Conjugation:	Unconjugated
Storage:	Store at -20°C as received.
Stability:	Stable for 12 months from date of receipt.
Predicted Protein Size:	10 kDa
Gene Name:	splicing factor 3b subunit 5
Database Link:	NP_112577 Entrez Gene 66125 Mouse Q9BWJ5
Background:	The function of this protein remains unknown.
Synonyms:	SF3b10; Ysf3
Note:	Immunogen Sequence Homology: Dog: 100%; Pig: 100%; Rat: 100%; Horse: 100%; Human: 100%; Bovine: 100%; Rabbit: 100%; Guinea pig: 100%; Mouse: 93%; Zebrafish: 92%
Protein Pathways:	Spliceosome



[View online »](#)

Product images:



Host: Rabbit; Target Name: Sf3b5; Sample Tissue: Mouse Thymus lysates; Antibody Dilution: 1.0 ug/ml