

Product datasheet for **TA343079**

IRTA2 (FCRL5) Rabbit Polyclonal Antibody

Product data:

Product Type:	Primary Antibodies
Applications:	WB
Recommended Dilution:	WB
Reactivity:	Human
Host:	Rabbit
Isotype:	IgG
Clonality:	Polyclonal
Immunogen:	The immunogen for anti-FCRL5 antibody is: synthetic peptide directed towards the C-terminal region of Human FCRL5. Synthetic peptide located within the following region: ALLLYCWLSRKAGRKPASDPARSPSDSDSQEPTYHNVPAWEELQPVYTNA
Formulation:	Liquid. Purified antibody supplied in 1x PBS buffer with 0.09% (w/v) sodium azide and 2% sucrose. <i>Note that this product is shipped as lyophilized powder to China customers.</i>
Conjugation:	Unconjugated
Storage:	Store at -20°C as received.
Stability:	Stable for 12 months from date of receipt.
Predicted Protein Size:	106 kDa
Gene Name:	Fc receptor like 5
Database Link:	NP_112571 Entrez Gene 83416 Human Q96RD9
Background:	This gene encodes a member of the immunoglobulin receptor superfamily and the Fc-receptor like family. This gene and several other Fc receptor-like gene members are clustered on the long arm of chromosome 1. The encoded protein is a single-pass type I membrane protein and contains 8 immunoglobulin-like C2-type domains. This gene is implicated in B cell development and lymphomagenesis. Alternatively spliced transcript variants encoding different isoforms have been identified.
Synonyms:	BXMAS1; CD307; CD307e; FCRH5; IRTA2; PRO820

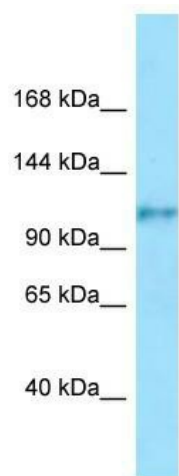


[View online »](#)

Note: Immunogen Sequence Homology: Human: 100%

Protein Families: Transmembrane

Product images:



WB Suggested Anti-FCRL5 Antibody; Titration: 1.0 ug/ml; Positive Control: Fetal Small Intestine