

## Product datasheet for **TA343078**

### PIGC Rabbit Polyclonal Antibody

#### Product data:

Product Type:	Primary Antibodies
Applications:	WB
Recommended Dilution:	WB
Reactivity:	Human
Host:	Rabbit
Isotype:	IgG
Clonality:	Polyclonal
Immunogen:	The immunogen for anti-PIGC antibody: synthetic peptide directed towards the C terminal of human PIGC. Synthetic peptide located within the following region: AVGAVL <span style="color: green;">FALL</span> LMSISCLCPFYLRQLFKENIHGPWDEAEIKEDLSRFLS
Formulation:	Liquid. Purified antibody supplied in 1x PBS buffer with 0.09% (w/v) sodium azide and 2% sucrose. <i>Note that this product is shipped as lyophilized powder to China customers.</i>
Conjugation:	Unconjugated
Storage:	Store at -20°C as received.
Stability:	Stable for 12 months from date of receipt.
Predicted Protein Size:	33 kDa
Gene Name:	phosphatidylinositol glycan anchor biosynthesis class C
Database Link:	<a href="#">NP_002633</a> <a href="#">Entrez Gene 5279 Human</a> <a href="#">Q92535</a>
Background:	This gene encodes an endoplasmic reticulum associated protein that is involved in glycosylphosphatidylinositol (GPI) lipid anchor biosynthesis. The GPI lipid anchor is a glycolipid found on many blood cells and serves to anchor proteins to the cell surface. The encoded protein is one subunit of the GPI N-acetylglucosaminyl (GlcNAc) transferase that transfers GlcNAc to phosphatidylinositol (PI) on the cytoplasmic side of the endoplasmic reticulum.
Synonyms:	GPI2



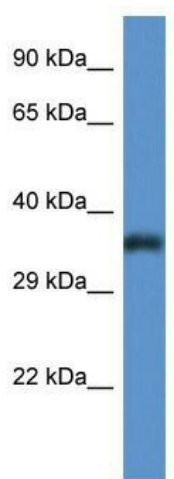
[View online »](#)

**Note:** Immunogen Sequence Homology: Dog: 100%; Pig: 100%; Rat: 100%; Human: 100%; Mouse: 100%; Bovine: 100%; Rabbit: 100%; Guinea pig: 100%; Horse: 93%; Zebrafish: 92%

**Protein Families:** Transmembrane

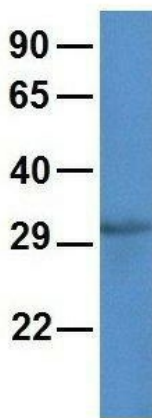
**Protein Pathways:** Glycosylphosphatidylinositol(GPI)-anchor biosynthesis, Metabolic pathways

**Product images:**



WB Suggested Anti-PIGC Antibody; Titration: 1.0 ug/ml; Positive Control: Fetal Lung

**PIGC**



Rabbit Anti-PIGC  
 Sample Type: Human 293T  
 Antibody Concentration: 1ug/mL

Host: Rabbit; Target Name: PIGC; Sample Tissue: Human 293T; Antibody Dilution: 1.0 ug/ml PIGC is strongly supported by BioGPS gene expression data to be expressed in Human HEK293T cells