

Product datasheet for **TA343069**

ASAH3 (ACER1) Rabbit Polyclonal Antibody

Product data:

Product Type:	Primary Antibodies
Applications:	WB
Recommended Dilution:	WB
Reactivity:	Human, Mouse
Host:	Rabbit
Isotype:	IgG
Clonality:	Polyclonal
Immunogen:	The immunogen for anti-ACER1 antibody: synthetic peptide directed towards the C terminal of human ACER1. Synthetic peptide located within the following region: VNAYALNSIALHILYIVCQEYRKTSNKELRHLIEVSVVLWVAALTSWISD
Formulation:	Liquid. Purified antibody supplied in 1x PBS buffer with 0.09% (w/v) sodium azide and 2% sucrose. <i>Note that this product is shipped as lyophilized powder to China customers.</i>
Conjugation:	Unconjugated
Storage:	Store at -20°C as received.
Stability:	Stable for 12 months from date of receipt.
Predicted Protein Size:	31 kDa
Gene Name:	alkaline ceramidase 1
Database Link:	NP_597999 Entrez Gene 125981 Human Q8TDN7
Background:	ACER1 hydrolyzes the sphingolipid ceramide into sphingosine and free fatty acid at an optimal pH of 8.0. It has a highly restricted substrate specificity for the natural stereoisomer of ceramide with D-erythro-sphingosine but not D-ribo-phytosphingosine or D-erythro-dihydrosphingosine as a backbone. It may have a role in regulating the levels of bioactive lipids ceramide and sphingosine 1-phosphate, as well as complex sphingolipids.
Synonyms:	ALKCDase1; ASAH3



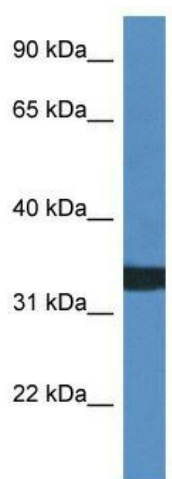
[View online »](#)

Note: Immunogen Sequence Homology: Human: 100%; Dog: 92%; Rabbit: 86%; Pig: 85%; Bovine: 79%; Rat; Guinea pig: 75%

Protein Families: Transmembrane

Protein Pathways: Metabolic pathways, Sphingolipid metabolism

Product images:



WB Suggested Anti-ACER1 Antibody; Titration: 1.0 ug/ml; Positive Control: HCT15 Whole Cell