

Product datasheet for **TA343068**

AMACR Rabbit Polyclonal Antibody

Product data:

Product Type:	Primary Antibodies
Applications:	IHC, WB
Recommended Dilution:	WB, IHC
Reactivity:	Human
Host:	Rabbit
Isotype:	IgG
Clonality:	Polyclonal
Immunogen:	The immunogen for anti-AMACR antibody: synthetic peptide directed towards the C terminal of human AMACR. Synthetic peptide located within the following region: IFDGTDACVTPVLTFEEVVHHDHNKERGSFITSEEQDVSPRPAPLLLNTP
Formulation:	Liquid. Purified antibody supplied in 1x PBS buffer with 0.09% (w/v) sodium azide and 2% sucrose. <i>Note that this product is shipped as lyophilized powder to China customers.</i>
Conjugation:	Unconjugated
Storage:	Store at -20°C as received.
Stability:	Stable for 12 months from date of receipt.
Predicted Protein Size:	42 kDa
Gene Name:	alpha-methylacyl-CoA racemase
Database Link:	NP_055139 Entrez Gene 23600 Human Q9UHK6



[View online »](#)

Background:

This gene encodes a racemase. The encoded enzyme interconverts pristanoyl-CoA and C27-bile acylCoAs between their (R)- and (S)-stereoisomers. The conversion to the (S)-stereoisomers is necessary for degradation of these substrates by peroxisomal beta-oxidation. Encoded proteins from this locus localize to both mitochondria and peroxisomes. Mutations in this gene may be associated with adult-onset sensorimotor neuropathy, pigmentary retinopathy, and adrenomyeloneuropathy due to defects in bile acid synthesis. Alternatively spliced transcript variants have been described. Read-through transcription also exists between this gene and the upstream neighboring C1QTNF3 (C1q and tumor necrosis factor related protein 3) gene.

Synonyms:

AMACRD; CBAS4; RACE; RM

Note:

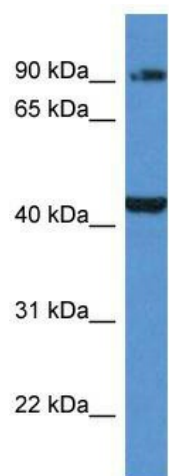
Immunogen Sequence Homology: Dog: 100%; Human: 100%; Pig: 85%; Rat: 85%; Horse: 85%; Bovine: 85%; Rabbit: 82%; Mouse; Guinea pig

Protein Families:

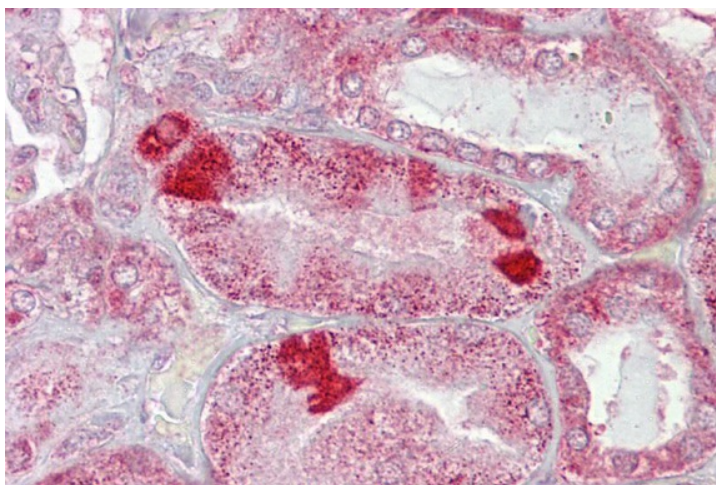
Druggable Genome

Protein Pathways:

Metabolic pathways, Primary bile acid biosynthesis

Product images:

AMACR antibody validated by WB using 721_B cell lysate at 1.0 ug/ml. AMACR is strongly supported by BioGPS gene expression data to be expressed in Human 721_B cells



Immunohistochemistry with Kidney tissue at an antibody concentration of 5 ug/ml using anti-AMACR antibody