

Product datasheet for **TA343066**

GPAT4 Rabbit Polyclonal Antibody

Product data:

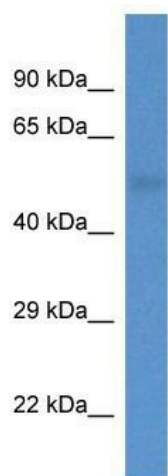
Product Type:	Primary Antibodies
Applications:	WB
Recommended Dilution:	WB
Reactivity:	Human
Host:	Rabbit
Isotype:	IgG
Clonality:	Polyclonal
Immunogen:	The immunogen for anti-AGPAT6 antibody: synthetic peptide directed towards the middle region of human AGPAT6. Synthetic peptide located within the following region: MSKHVHLMCYRICVRALTAITYHDRENRPNGGICVANHTSPIDVIILA
Formulation:	Liquid. Purified antibody supplied in 1x PBS buffer with 0.09% (w/v) sodium azide and 2% sucrose. <i>Note that this product is shipped as lyophilized powder to China customers.</i>
Conjugation:	Unconjugated
Storage:	Store at -20°C as received.
Stability:	Stable for 12 months from date of receipt.
Predicted Protein Size:	52 kDa
Gene Name:	glycerol-3-phosphate acyltransferase 4
Database Link:	NP_848934 Entrez Gene 137964 Human Q86UL3
Background:	Lysophosphatidic acid acyltransferases catalyze the conversion of lysophosphatidic acid (LPA) to phosphatidic acid (PA). LPA and PA are involved in signal transduction and lipid biosynthesis.
Synonyms:	1-AGPAT 6; AGPAT6; LPAAT-zeta; LPAATZ; TSARG7
Note:	Immunogen Sequence Homology: Dog: 100%; Human: 100%; Pig: 93%; Rat: 93%; Horse: 93%; Bovine: 93%; Rabbit: 93%; Guinea pig: 93%; Goat: 86%; Mouse: 86%; Zebrafish: 79%
Protein Families:	Transmembrane



[View online »](#)

Protein Pathways: Ether lipid metabolism, Glycerolipid metabolism, Glycerophospholipid metabolism, Metabolic pathways

Product images:



WB Suggested Anti-AGPAT6 Antibody; Titration: 1.0 ug/ml; Positive Control: Fetal Lung