

Product datasheet for **TA343065**

AGPAT3 Rabbit Polyclonal Antibody

Product data:

Product Type:	Primary Antibodies
Applications:	WB
Recommended Dilution:	WB
Reactivity:	Human
Host:	Rabbit
Isotype:	IgG
Clonality:	Polyclonal
Immunogen:	The immunogen for anti-AGPAT3 antibody: synthetic peptide directed towards the middle region of human AGPAT3. Synthetic peptide located within the following region: KRKWEEDRDTVVEGLRRLSDYPEYMWFLLYCEGTRFTETKHRVSMEVAAA
Formulation:	Liquid. Purified antibody supplied in 1x PBS buffer with 0.09% (w/v) sodium azide and 2% sucrose. <i>Note that this product is shipped as lyophilized powder to China customers.</i>
Conjugation:	Unconjugated
Storage:	Store at -20°C as received.
Stability:	Stable for 12 months from date of receipt.
Predicted Protein Size:	43 kDa
Gene Name:	1-acylglycerol-3-phosphate O-acyltransferase 3
Database Link:	NP_064517 Entrez Gene 56894 Human Q9NRZ7
Background:	The protein encoded by this gene is an acyltransferase that converts lysophosphatidic acid into phosphatidic acid, which is the second step in the de novo phospholipid biosynthetic pathway. The encoded protein may be an integral membrane protein. Two transcript variants encoding the same protein have been found for this gene.
Synonyms:	LPAAT-GAMMA1; LPAAT3
Note:	Immunogen Sequence Homology: Pig: 100%; Human: 100%; Zebrafish: 100%; Rat: 93%; Horse: 93%; Mouse: 93%; Guinea pig: 93%; Dog: 86%; Bovine: 86%

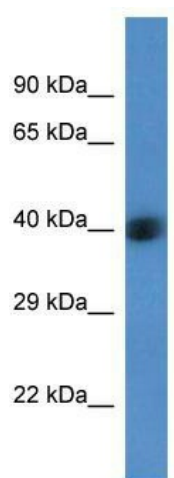


[View online »](#)

Protein Families: Transmembrane

Protein Pathways: Ether lipid metabolism, Glycerolipid metabolism, Glycerophospholipid metabolism, Metabolic pathways

Product images:



WB Suggested Anti-AGPAT3 Antibody; Titration: 1.0 ug/ml; Positive Control: Fetal Liver