

Product datasheet for **TA343062**

ACSF2 Rabbit Polyclonal Antibody

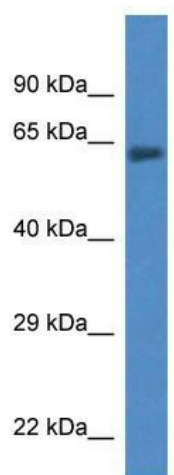
Product data:

Product Type:	Primary Antibodies
Applications:	WB
Recommended Dilution:	WB
Reactivity:	Human
Host:	Rabbit
Isotype:	IgG
Clonality:	Polyclonal
Immunogen:	The immunogen for anti-ACSF2 antibody: synthetic peptide directed towards the C terminal of human ACSF2. Synthetic peptide located within the following region: DLVWAYGTTENSPVTFAHFPEDTVEQKAESVGRIMPHTEARIMNMEAGTL
Formulation:	Liquid. Purified antibody supplied in 1x PBS buffer with 0.09% (w/v) sodium azide and 2% sucrose. <i>Note that this product is shipped as lyophilized powder to China customers.</i>
Conjugation:	Unconjugated
Storage:	Store at -20°C as received.
Stability:	Stable for 12 months from date of receipt.
Predicted Protein Size:	68 kDa
Gene Name:	acyl-CoA synthetase family member 2
Database Link:	NP_079425 Entrez Gene 80221 Human Q96CM8
Background:	Acyl-CoA synthases catalyze the initial reaction in fatty acid metabolism, by forming a thioester with CoA. ACSF2 has some preference toward medium-chain substrates. It plays a role in adipocyte differentiation.
Synonyms:	ACSMW; AVYV493
Note:	Immunogen Sequence Homology: Human: 100%; Bovine: 100%; Pig: 93%; Rabbit: 93%; Dog: 92%; Rat: 86%; Mouse: 86%; Guinea pig: 86%; Horse: 85%



[View online »](#)

Product images:



WB Suggested Anti-ACSF2 Antibody; Titration: 1.0 ug/ml; Positive Control: Fetal Lung