

## Product datasheet for **TA343060**

### ACSBG1 Rabbit Polyclonal Antibody

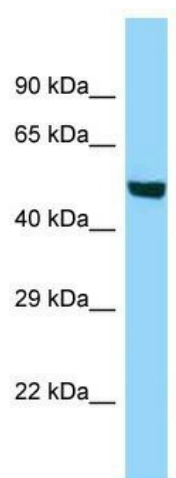
#### Product data:

Product Type:	Primary Antibodies
Applications:	WB
Recommended Dilution:	WB
Reactivity:	Human
Host:	Rabbit
Isotype:	IgG
Clonality:	Polyclonal
Immunogen:	The immunogen for anti-ACSBG1 antibody is: synthetic peptide directed towards the C-terminal region of Human ACSBG1. Synthetic peptide located within the following region: NQDAEGIGEICLWGRTIFMGYLNMEDKTCEAIDEEGWLHTGDAGRLDADG
Formulation:	Liquid. Purified antibody supplied in 1x PBS buffer with 0.09% (w/v) sodium azide and 2% sucrose. <i>Note that this product is shipped as lyophilized powder to China customers.</i>
Purification:	Affinity Purified
Conjugation:	Unconjugated
Storage:	Store at -20°C as received.
Stability:	Stable for 12 months from date of receipt.
Predicted Protein Size:	53 kDa
Gene Name:	acyl-CoA synthetase bubblegum family member 1
Database Link:	<a href="#">NP_055977</a> <a href="#">Entrez Gene 23205 Human</a> <a href="#">Q96GR2</a>
Background:	The function of this protein remains unknown.
Synonyms:	BG; BG1; BGM; GR-LACS; LPD
Note:	Immunogen Sequence Homology: Human: 100%; Rat: 93%; Mouse: 93%; Bovine: 93%; Dog: 86%; Pig: 86%; Rabbit: 86%; Guinea pig: 86%



[View online »](#)

## Product images:



Host: Rabbit; Target Name: ACSBG1; Sample Tissue: HT1080 Whole Cell lysates; Antibody Dilution: 1.0 ug/ml