

## Product datasheet for **TA343055**

### CYP2W1 Rabbit Polyclonal Antibody

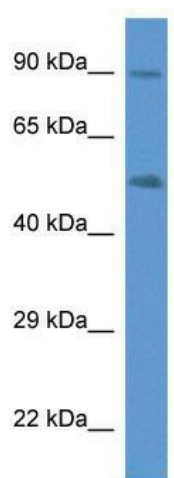
#### Product data:

Product Type:	Primary Antibodies
Applications:	WB
Recommended Dilution:	WB
Reactivity:	Human
Host:	Rabbit
Isotype:	IgG
Clonality:	Polyclonal
Immunogen:	The immunogen for anti-CYP2W1 antibody: synthetic peptide directed towards the C terminal of human CYP2W1. Synthetic peptide located within the following region: PVCSYVDALIQQGDDPEGLFAEANA VACTLDMVMAGTETTSATLQWAA
Formulation:	Liquid. Purified antibody supplied in 1x PBS buffer with 0.09% (w/v) sodium azide and 2% sucrose. <i>Note that this product is shipped as lyophilized powder to China customers.</i>
Conjugation:	Unconjugated
Storage:	Store at -20°C as received.
Stability:	Stable for 12 months from date of receipt.
Predicted Protein Size:	54 kDa
Gene Name:	cytochrome P450 family 2 subfamily W member 1
Database Link:	<a href="#">NP_060251</a> <a href="#">Entrez Gene 54905 Human</a> <a href="#">Q8TAV3</a>
Background:	This gene encodes a member of the cytochrome P450 superfamily of enzymes. The cytochrome P450 proteins are monooxygenases which catalyze many reactions involved in drug metabolism and synthesis of cholesterol, steroids and other lipids.
Synonyms:	MGC34287
Note:	Immunogen Sequence Homology: Human: 100%; Pig: 93%; Dog: 86%; Bovine: 85%; Horse: 79%; Rat: 75%
Protein Families:	Druggable Genome, P450



[View online »](#)

## Product images:



WB Suggested Anti-CYP2W1 Antibody; Titration:  
1.0 ug/ml; Positive Control: Fetal Lung