

## Product datasheet for **TA343054**

### TARP Rabbit Polyclonal Antibody

#### Product data:

Product Type:	Primary Antibodies
Applications:	WB
Recommended Dilution:	WB
Reactivity:	Human
Host:	Rabbit
Isotype:	IgG
Clonality:	Polyclonal
Immunogen:	The immunogen for anti-TARP antibody: synthetic peptide directed towards the N terminal of human TARP. Synthetic peptide located within the following region: YMKFSWLTVPEKSLDKHEHRCIVRHENKNGVDQEIIFFPIKTDVITMDPK
Formulation:	Liquid. Purified antibody supplied in 1x PBS buffer with 0.09% (w/v) sodium azide and 2% sucrose. <i>Note that this product is shipped as lyophilized powder to China customers.</i>
Conjugation:	Unconjugated
Storage:	Store at -20°C as received.
Stability:	Stable for 12 months from date of receipt.
Predicted Protein Size:	13 kDa
Gene Name:	TCR gamma alternate reading frame protein
Database Link:	<a href="#">NP_001003806</a> <a href="#">Entrez Gene 445347 Human</a>
Background:	In some non-lymphoid tissues, the unrearranged T cell receptor gamma (TRG@) locus is expressed. The resulting transcript contains a subset of the TRG@ gene segments and is shorter than TRG@ transcripts expressed in lymphoid tissues. This RefSeq record represents the unrearranged TRG@ locus transcript; the complete TRG@ locus is represented by the genomic RefSeq NG_001336. The transcript represented by this RefSeq has two open reading frames (ORFs) that encode different proteins. The downstream ORF is in the same frame as TRG@ and its protein product is similar to TRG@ proteins. The upstream ORF uses a different reading frame and encodes a novel protein.



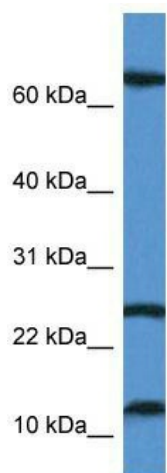
[View online »](#)

**Synonyms:** CD3G; TCRG; TCRGC1; TCRGC2; TCRGV

**Note:** Immunogen Sequence Homology: Human: 100%; Horse: 86%; Mouse: 86%; Pig: 79%; Rat: 79%

**Protein Families:** Transmembrane

### Product images:



WB Suggested Anti-TARP Antibody; Titration: 1.0 ug/ml; Positive Control: Jurkat Whole Cell There is BioGPS gene expression data showing that TARP is expressed in Jurkat