

Product datasheet for **TA343053**

SPANXB1 Rabbit Polyclonal Antibody

Product data:

Product Type:	Primary Antibodies
Applications:	WB
Recommended Dilution:	WB
Reactivity:	Human
Host:	Rabbit
Isotype:	IgG
Clonality:	Polyclonal
Immunogen:	The immunogen for anti-SPANXB1 antibody is: synthetic peptide directed towards the middle region of Human SPANXB1. Synthetic peptide located within the following region: MPETPTGSDPQPAPKKMKTSESSTILVVRNVRNKRKTSPEELVNDHARE
Formulation:	Liquid. Purified antibody supplied in 1x PBS buffer with 0.09% (w/v) sodium azide and 2% sucrose.
Conjugation:	Unconjugated
Storage:	Store at -20°C as received.
Stability:	Stable for 12 months from date of receipt.
Predicted Protein Size:	12 kDa
Gene Name:	SPANX family member B1
Database Link:	NP_115850 Entrez Gene 728695 Human Q9NS25



[View online »](#)

Background:

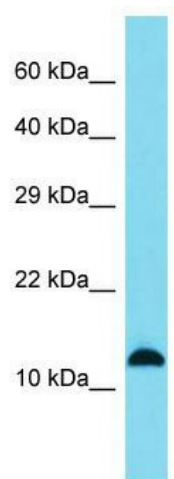
Temporally regulated transcription and translation of several testis-specific genes is required to initiate the series of molecular and morphological changes in the male germ cell lineage necessary for the formation of mature spermatozoa. This gene is a member of the SPANX family of cancer/testis-associated genes, which are located in a cluster on chromosome X. The SPANX genes encode differentially expressed testis-specific proteins that localize to various subcellular compartments. This particular gene maps to chromosome X in a head-to-tail orientation with SPANX family member B2, which appears to be a duplication of the B1 locus. The SPANXB genes are unique members of this gene family, since they contain an additional 18 nt in their coding region compared to the majority of family members. Although the protein encoded by this gene contains consensus nuclear localization signals, the major site for subcellular localization of expressed protein is in the cytoplasmic droplets of ejaculated spermatozoa. This protein provides a biochemical marker for studying the unique structures in spermatozoa, while attempting to further define its role in spermatogenesis.

Synonyms:

B1; CT11.2; SPANX-B; SPANXB; SPANXB2; SPANXF1; SPANXF2

Note:

Immunogen Sequence Homology: Human: 100%

Product images:

Host: Rabbit; Target Name: SPANXB1; Sample
Tissue: A549 Whole Cell lysates; Antibody
Dilution: 1.0 ug/ml