

Product datasheet for **TA343052**

JAKMIP2 Rabbit Polyclonal Antibody

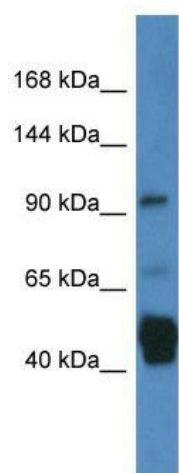
Product data:

Product Type:	Primary Antibodies
Applications:	WB
Recommended Dilution:	WB
Reactivity:	Human
Host:	Rabbit
Isotype:	IgG
Clonality:	Polyclonal
Immunogen:	The immunogen for anti-JAKMIP2 antibody: synthetic peptide directed towards the C terminal of human JAKMIP2. Synthetic peptide located within the following region: KSREYDCQILQERMELLQQAHQIRDLEDKTDIQKRQIKDLEEKSNRKHG
Formulation:	Liquid. Purified antibody supplied in 1x PBS buffer with 0.09% (w/v) sodium azide and 2% sucrose. <i>Note that this product is shipped as lyophilized powder to China customers.</i>
Conjugation:	Unconjugated
Storage:	Store at -20°C as received.
Stability:	Stable for 12 months from date of receipt.
Predicted Protein Size:	95 kDa
Gene Name:	janus kinase and microtubule interacting protein 2
Database Link:	NP_055605 Entrez Gene 9832 Human Q96AA8
Background:	The function remains unknown.
Synonyms:	JAMIP2; NECC1
Note:	Immunogen Sequence Homology: Dog: 100%; Horse: 100%; Human: 100%



[View online »](#)

Product images:



WB Suggested Anti-JAKMIP2 Antibody; Titration:
1.0 ug/ml; Positive Control: Fetal Lung