

Product datasheet for **TA343049**

FAM120C Rabbit Polyclonal Antibody

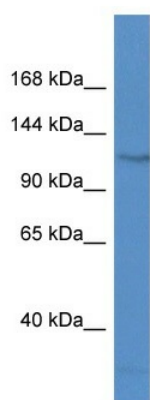
Product data:

Product Type:	Primary Antibodies
Recommended Dilution:	WB
Reactivity:	Human
Host:	Rabbit
Isotype:	IgG
Clonality:	Polyclonal
Immunogen:	The immunogen for anti-FAM120? antibody: synthetic peptide directed towards the N terminal of human FAM120?. Synthetic peptide located within the following region: IKAVSEYVSSIKDPSNLDVVGKDVFKQSQSRTEDKIERFKKAVEYYSVTT
Formulation:	Liquid. Purified antibody supplied in 1x PBS buffer with 0.09% (w/v) sodium azide and 2% sucrose.
Conjugation:	Unconjugated
Storage:	Store at -20°C as received.
Stability:	Stable for 12 months from date of receipt.
Predicted Protein Size:	120 kDa
Gene Name:	family with sequence similarity 120C
Database Link:	NP_060318 Entrez Gene 54954 Human Q9NX05
Background:	The function remains unknown.
Synonyms:	CXorf17; ORF34
Note:	Immunogen Sequence Homology: Rat: 100%; Horse: 100%; Human: 100%; Mouse: 100%; Bovine: 100%; Rabbit: 100%; Zebrafish: 100%; Dog: 93%



[View online »](#)

Product images:



WB Suggested Anti-FAM120^C Antibody
Titration: 1.0 ug/ml
Positive Control: Jurkat Whole Cell