

Product datasheet for **TA343048**

CAB39L Rabbit Polyclonal Antibody

Product data:

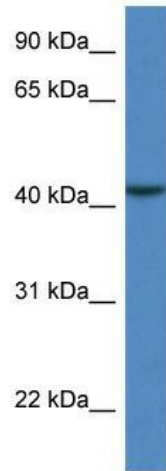
Product Type:	Primary Antibodies
Applications:	WB
Recommended Dilution:	WB
Reactivity:	Human
Host:	Rabbit
Isotype:	IgG
Clonality:	Polyclonal
Immunogen:	The immunogen for anti-CAB39L antibody: synthetic peptide directed towards the N terminal of human CAB39L. Synthetic peptide located within the following region: EILCGTNEKEPPTAEVAQLAQELYSSGLLVTLIADLQLIDFEGKKDVTQI
Formulation:	Liquid. Purified antibody supplied in 1x PBS buffer with 0.09% (w/v) sodium azide and 2% sucrose. <i>Note that this product is shipped as lyophilized powder to China customers.</i>
Conjugation:	Unconjugated
Storage:	Store at -20°C as received.
Stability:	Stable for 12 months from date of receipt.
Predicted Protein Size:	39 kDa
Gene Name:	calcium binding protein 39 like
Database Link:	NP_112187 Entrez Gene 81617 Human Q9H9S4
Background:	The function of this protein remains unknown.
Synonyms:	bA103J18.3; MO2L; MO25-BETA



Note: Immunogen Sequence Homology: Human: 100%; Dog: 93%; Pig: 93%; Rat: 93%; Horse: 93%;
Mouse: 93%; Bovine: 93%; Rabbit: 93%; Zebrafish: 93%; Guinea pig: 93%

Protein Pathways: mTOR signaling pathway

Product images:



WB Suggested Anti-CAB39L Antibody;
Titration: 1.0 ug/ml; Positive Control: COLO205
Whole Cell