

Product datasheet for **TA343046**

MIA2 Rabbit Polyclonal Antibody

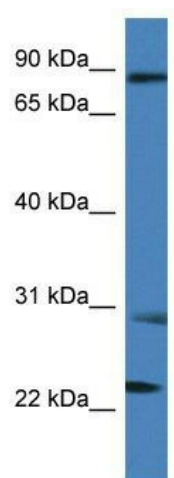
Product data:

| | |
|-------------------------|---|
| Product Type: | Primary Antibodies |
| Applications: | WB |
| Recommended Dilution: | WB |
| Reactivity: | Human |
| Host: | Rabbit |
| Isotype: | IgG |
| Clonality: | Polyclonal |
| Immunogen: | The immunogen for anti-MIA2 antibody: synthetic peptide directed towards the C terminal of human MIA2. Synthetic peptide located within the following region: NTKVMIFKSSYSLSDMVSNIELPTRIHEEVYFEPSSSKDSDENSKPSVDT |
| Formulation: | Liquid. Purified antibody supplied in 1x PBS buffer with 0.09% (w/v) sodium azide and 2% sucrose. <i>Note that this product is shipped as lyophilized powder to China customers.</i> |
| Conjugation: | Unconjugated |
| Storage: | Store at -20°C as received. |
| Stability: | Stable for 12 months from date of receipt. |
| Predicted Protein Size: | 74 kDa |
| Gene Name: | melanoma inhibitory activity 2 |
| Database Link: | NP_473365 Entrez Gene 4253 Human Entrez Gene 117153 Human |
| Background: | MIA2 may play a role in the pathophysiology of liver disease and may serve as a marker of liver damage. |
| Synonyms: | FLJ22404 |
| Note: | Immunogen Sequence Homology: Human: 100% |
| Protein Families: | Transmembrane |



[View online »](#)

Product images:



WB Suggested Anti-MIA2 Antibody; Titration: 1.0 ug/ml; Positive Control: THP-1 Whole Cell