

## Product datasheet for **TA343043**

### IL21 Rabbit Polyclonal Antibody

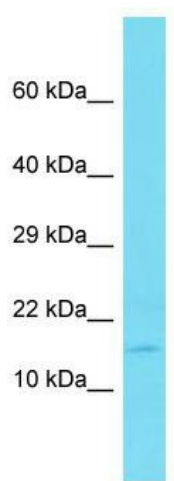
#### Product data:

Product Type:	Primary Antibodies
Applications:	WB
Recommended Dilution:	WB
Reactivity:	Human
Host:	Rabbit
Isotype:	IgG
Clonality:	Polyclonal
Immunogen:	The immunogen for anti-IL21 antibody is: synthetic peptide directed towards the C-terminal region of Human IL21. Synthetic peptide located within the following region: ERIINVSIKKLRKPPSTNAGRRQKHRLTCPCSDSYEKKPPKEFLERFKS
Formulation:	Liquid. Purified antibody supplied in 1x PBS buffer with 0.09% (w/v) sodium azide and 2% sucrose. <i>Note that this product is shipped as lyophilized powder to China customers.</i>
Conjugation:	Unconjugated
Storage:	Store at -20°C as received.
Stability:	Stable for 12 months from date of receipt.
Predicted Protein Size:	16 kDa
Gene Name:	interleukin 21
Database Link:	<a href="#">NP_001193935</a> <a href="#">Entrez Gene 59067 Human</a> <a href="#">Q9HBE4</a>
Background:	This gene encodes a member of the common-gamma chain family of cytokines with immunoregulatory activity. The encoded protein plays a role in both the innate and adaptive immune responses by inducing the differentiation, proliferation and activity of multiple target cells including macrophages, natural killer cells, B cells and cytotoxic T cells. Dysregulation of this gene plays a role in multiple immune-mediated diseases including lupus, psoriasis and chronic inflammatory diseases. Alternatively spliced transcript variants encoding multiple isoforms have been observed for this gene.



[View online »](#)

<b>Synonyms:</b>	CVID11; IL-21; Za11
<b>Note:</b>	Immunogen Sequence Homology: Human: 100%; Dog: 86%; Pig: 86%; Goat: 86%; Sheep: 86%; Horse: 79%; Bovine: 79%
<b>Protein Families:</b>	Druggable Genome, Secreted Protein
<b>Protein Pathways:</b>	Cytokine-cytokine receptor interaction, Jak-STAT signaling pathway

**Product images:**

Host: Rabbit; Target Name: IL21; Sample Tissue: Fetal Liver lysates; Antibody Dilution: 1.0 ug/ml