

## Product datasheet for **TA343042**

### IL20RB Rabbit Polyclonal Antibody

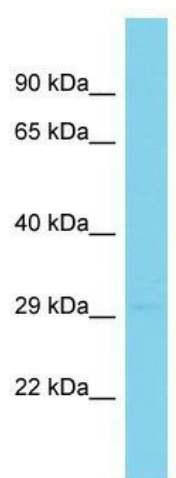
#### Product data:

Product Type:	Primary Antibodies
Applications:	WB
Recommended Dilution:	WB
Reactivity:	Mouse
Host:	Rabbit
Isotype:	IgG
Clonality:	Polyclonal
Immunogen:	The immunogen for anti-IL20rb antibody is: synthetic peptide directed towards the middle region of Mouse IL20rb. Synthetic peptide located within the following region: LEDLGPQFEFLVYWRREPGAAEHVKMVRSGDIPVHLETMEPGAMYCVKA
Formulation:	Liquid. Purified antibody supplied in 1x PBS buffer with 0.09% (w/v) sodium azide and 2% sucrose. <i>Note that this product is shipped as lyophilized powder to China customers.</i>
Conjugation:	Unconjugated
Storage:	Store at -20°C as received.
Stability:	Stable for 12 months from date of receipt.
Predicted Protein Size:	31 kDa
Gene Name:	interleukin 20 receptor subunit beta
Database Link:	<a href="#">NP_653318</a> <a href="#">Entrez Gene 213208 Mouse</a> <a href="#">Q6UXL0</a>
Background:	The function of this protein remains unknown.
Synonyms:	DIRS1; FNDC6; IL-20R2
Note:	Immunogen Sequence Homology: Human: 100%; Pig: 93%; Mouse: 92%; Dog: 86%; Horse: 86%; Rabbit: 86%; Bovine: 85%; Rat
Protein Families:	Druggable Genome, Transmembrane
Protein Pathways:	Cytokine-cytokine receptor interaction, Jak-STAT signaling pathway



[View online »](#)

Product images:



Host: Rabbit; Target Name: Il20rb; Sample Tissue: Mouse Stomach lysates; Antibody Dilution: 1.0 ug/ml