

Product datasheet for **TA343041**

IL18 Rabbit Polyclonal Antibody

Product data:

Product Type:	Primary Antibodies
Applications:	WB
Recommended Dilution:	WB
Reactivity:	Human
Host:	Rabbit
Isotype:	IgG
Clonality:	Polyclonal
Immunogen:	The immunogen for anti-IL18 antibody: synthetic peptide directed towards the C terminal of human IL18. Synthetic peptide located within the following region: IIFQRSVPGHDNKMQFESSYEGYFLACEKERDLFKLILKKEDELGDRS
Formulation:	Liquid. Purified antibody supplied in 1x PBS buffer with 0.09% (w/v) sodium azide and 2% sucrose. <i>Note that this product is shipped as lyophilized powder to China customers.</i>
Conjugation:	Unconjugated
Storage:	Store at -20°C as received.
Stability:	Stable for 12 months from date of receipt.
Predicted Protein Size:	18 kDa
Gene Name:	interleukin 18
Database Link:	NP_001553 Entrez Gene 3606 Human Q14116
Background:	The protein encoded by this gene is a proinflammatory cytokine. This cytokine can induce the IFN-gamma production of T cells. The combination of this cytokine and IL12 has been shown to inhibit IL4 dependent IgE and IgG1 production, and enhance IgG2a production of B cells. IL-18 binding protein (IL18BP) can specifically interact with this cytokine, and thus negatively regulate its biological activity.
Synonyms:	IGIF; IL-1g; IL-18; IL1F4
Note:	Immunogen Sequence Homology: Human: 100%; Rat: 79%; Mouse: 79%

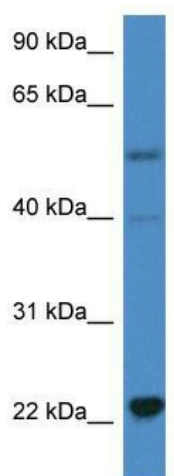


[View online »](#)

Protein Families: Druggable Genome, Secreted Protein

Protein Pathways: Cytokine-cytokine receptor interaction, Cytosolic DNA-sensing pathway, NOD-like receptor signaling pathway

Product images:



WB Suggested Anti-IL18 Antibody; Titration: 1.0 ug/ml; Positive Control: HeLa Whole Cell IL18 is supported by BioGPS gene expression data to be expressed in HeLa