

Product datasheet for **TA343040**

IFNA4 Rabbit Polyclonal Antibody

Product data:

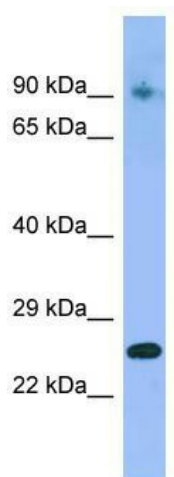
Product Type:	Primary Antibodies
Applications:	WB
Recommended Dilution:	WB
Reactivity:	Human
Host:	Rabbit
Isotype:	IgG
Clonality:	Polyclonal
Immunogen:	The immunogen for anti-IFNA4 antibody is: synthetic peptide directed towards the C-terminal region of Human IFNA4. Synthetic peptide located within the following region: ILAVRKYFQRITLYLTEKKYSPCAWEVVRAEIMRSLSFSTNLQKRLRRKD
Formulation:	Liquid. Purified antibody supplied in 1x PBS buffer with 0.09% (w/v) sodium azide and 2% sucrose. <i>Note that this product is shipped as lyophilized powder to China customers.</i>
Conjugation:	Unconjugated
Storage:	Store at -20°C as received.
Stability:	Stable for 12 months from date of receipt.
Predicted Protein Size:	21 kDa
Gene Name:	interferon, alpha 4
Database Link:	NP_066546 Entrez Gene 3441 Human P05014
Background:	IFNA4 is produced by macrophages, IFN-alpha have antiviral activities. Interferon stimulates the production of two enzymes: a protein kinase and an oligoadenylate synthetase.
Synonyms:	IFN-alpha4a; INFA4
Note:	Immunogen Sequence Homology: Human: 100%; Pig: 83%; Goat: 83%; Sheep: 83%; Bovine: 83%
Protein Families:	Druggable Genome, Secreted Protein



[View online »](#)

Protein Pathways:

Antigen processing and presentation, Autoimmune thyroid disease, Cytokine-cytokine receptor interaction, Cytosolic DNA-sensing pathway, Jak-STAT signaling pathway, Natural killer cell mediated cytotoxicity, Regulation of autophagy, RIG-I-like receptor signaling pathway, Toll-like receptor signaling pathway

Product images:

WB Suggested Anti-IFNA4 Antibody; Titration: 1.0 ug/ml; Positive Control: Fetal Stomach