

Product datasheet for **TA343039**

IFNA16 Rabbit Polyclonal Antibody

Product data:

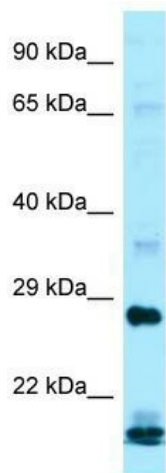
Product Type:	Primary Antibodies
Applications:	WB
Recommended Dilution:	WB
Reactivity:	Human
Host:	Rabbit
Isotype:	IgG
Clonality:	Polyclonal
Immunogen:	The immunogen for anti-IFNA16 antibody is: synthetic peptide directed towards the C-terminal region of Human IFNA16. Synthetic peptide located within the following region: ILAVRKYFQRITLYLMGKKYSPCAWEVRAEIMRSFSFSTNLQGLRRKD
Formulation:	Liquid. Purified antibody supplied in 1x PBS buffer with 0.09% (w/v) sodium azide and 2% sucrose. <i>Note that this product is shipped as lyophilized powder to China customers.</i>
Purification:	Affinity Purified
Conjugation:	Unconjugated
Storage:	Store at -20°C as received.
Stability:	Stable for 12 months from date of receipt.
Predicted Protein Size:	22 kDa
Gene Name:	interferon, alpha 16
Database Link:	NP_002164 Entrez Gene 3449 Human P05015
Background:	IFNA16 is produced by macrophages, IFN-alpha have antiviral activities. Interferon stimulates the production of two enzymes: a protein kinase and an oligoadenylate synthetase.
Synonyms:	IFN-alphaO
Note:	Immunogen Sequence Homology: Human: 100%
Protein Families:	Druggable Genome, Secreted Protein



[View online »](#)

Protein Pathways:

Antigen processing and presentation, Autoimmune thyroid disease, Cytokine-cytokine receptor interaction, Cytosolic DNA-sensing pathway, Jak-STAT signaling pathway, Natural killer cell mediated cytotoxicity, Regulation of autophagy, RIG-I-like receptor signaling pathway, Toll-like receptor signaling pathway

Product images:

Host: Rabbit; Target Name: IFNA16; Sample Tissue: ACHN whole cell lysates; Antibody Dilution: 1.0 ug/ml