

## Product datasheet for **TA343038**

### Interferon alpha (IFNA13) Rabbit Polyclonal Antibody

#### Product data:

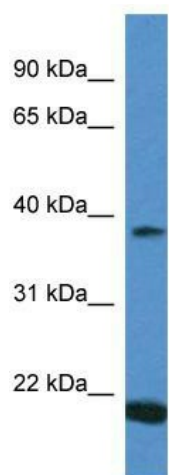
|                         |  |
|-------------------------|--|
| Product Type:           | Primary Antibodies   |
| Applications:           | WB   |
| Recommended Dilution:   | WB   |
| Reactivity:             | Human  |
| Host:                   | Rabbit   |
| Isotype:                | IgG  |
| Clonality:              | Polyclonal   |
| Immunogen:              | The immunogen for anti-IFNA13 antibody: synthetic peptide directed towards the C terminal of human IFNA13. Synthetic peptide located within the following region:<br>ILAVKKYFRRITLYLTEKKYSPCAWEVVRAEIMRSLSLSTNLQERLRKE |
| Formulation:            | Liquid. Purified antibody supplied in 1x PBS buffer with 0.09% (w/v) sodium azide and 2% sucrose.  |
| Conjugation:            | Unconjugated   |
| Storage:                | Store at -20°C as received.  |
| Stability:              | Stable for 12 months from date of receipt.   |
| Predicted Protein Size: | 21 kDa   |
| Gene Name:              | interferon, alpha 13   |
| Database Link:          | <a href="#">NP_008831</a><br><a href="#">Entrez Gene 3447 Human</a><br><a href="#">P01562</a>  |
| Background:             | IFNA13 is produced by macrophages, IFN-alpha have antiviral activities. Interferon stimulates the production of two enzymes: a protein kinase and an oligoadenylate synthetase.  |
| Synonyms:               | IFNA1  |
| Note:                   | Immunogen Sequence Homology: Human: 100%; Bovine: 100%; Pig: 92%; Dog: 83%; Goat: 83%; Sheep: 83%  |
| Protein Families:       | Druggable Genome, Secreted Protein   |



[View online »](#)

**Protein Pathways:**

Antigen processing and presentation, Autoimmune thyroid disease, Cytokine-cytokine receptor interaction, Cytosolic DNA-sensing pathway, Jak-STAT signaling pathway, Natural killer cell mediated cytotoxicity, Regulation of autophagy, RIG-I-like receptor signaling pathway, Toll-like receptor signaling pathway

**Product images:**

WB Suggested Anti-IFNA13 Antibody; Titration:  
1.0 ug/ml; Positive Control: Placenta