

Product datasheet for **TA343035**

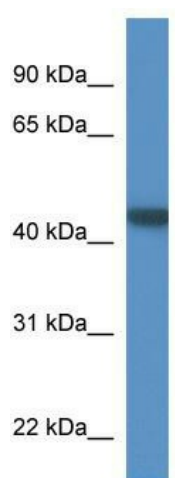
PNMA6A Rabbit Polyclonal Antibody

Product data:

Product Type:	Primary Antibodies
Applications:	WB
Recommended Dilution:	WB
Reactivity:	Human
Host:	Rabbit
Isotype:	IgG
Clonality:	Polyclonal
Immunogen:	The immunogen for anti-PNMA6A antibody: synthetic peptide directed towards the N terminal of human PNMA6A. Synthetic peptide located within the following region: FTVLGKVFREEDNATAALVELDREVNYALVPREIPGTGGPWNVVFVPRCS
Formulation:	Liquid. Purified antibody supplied in 1x PBS buffer with 0.09% (w/v) sodium azide and 2% sucrose. <i>Note that this product is shipped as lyophilized powder to China customers.</i>
Conjugation:	Unconjugated
Storage:	Store at -20°C as received.
Stability:	Stable for 12 months from date of receipt.
Predicted Protein Size:	44 kDa
Gene Name:	paraneoplastic Ma antigen family member 6A
Database Link:	NP_116271 Entrez Gene 84968 Human P0CW24
Background:	The function of this protein remains unknown.
Synonyms:	MA6; PNMA6; PNMA6C
Note:	Immunogen Sequence Homology: Dog: 100%; Human: 100%



[View online »](#)

Product images:

WB Suggested Anti-PNMA6A Antibody Titration:
0.2-1 ug/ml; ELISA Titer: 1:312500; Positive
Control: Human Lung