

## Product datasheet for **TA343034**

### FBXL20 Rabbit Polyclonal Antibody

#### Product data:

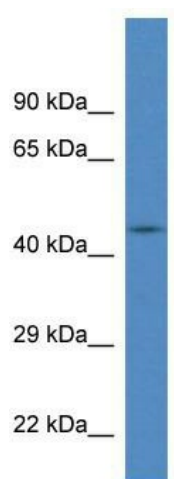
Product Type:	Primary Antibodies
Applications:	WB
Recommended Dilution:	WB
Reactivity:	Human
Host:	Rabbit
Isotype:	IgG
Clonality:	Polyclonal
Immunogen:	The immunogen for anti-FBXL20 antibody: synthetic peptide directed towards the N terminal of human FBXL20. Synthetic peptide located within the following region: RTFAQNCRNIEVLNNGCTKTTDATCTSLSKFCSKLRHLDLASCTSITNM
Formulation:	Liquid. Purified antibody supplied in 1x PBS buffer with 0.09% (w/v) sodium azide and 2% sucrose. <i>Note that this product is shipped as lyophilized powder to China customers.</i>
Conjugation:	Unconjugated
Storage:	Store at -20°C as received.
Stability:	Stable for 12 months from date of receipt.
Predicted Protein Size:	48 kDa
Gene Name:	F-box and leucine-rich repeat protein 20
Database Link:	<a href="#">NP_116264</a> <a href="#">Entrez Gene 84961 Human</a> <a href="#">Q96IG2</a>
Background:	Members of the F-box protein family, such as FBXL20, are characterized by an approximately 40-amino acid F-box motif. SCF complexes, formed by SKP1, cullin, and F-box proteins, act as protein-ubiquitin ligases. F-box proteins interact with SKP1 through the F box, and they interact with ubiquitination targets through other protein interaction domains
Synonyms:	Fbl2; Fbl20
Note:	Immunogen Sequence Homology: Dog: 100%; Pig: 100%; Rat: 100%; Horse: 100%; Human: 100%; Mouse: 100%; Bovine: 100%; Rabbit: 100%; Guinea pig: 100%; Zebrafish: 79%



[View online »](#)

Protein Families: Druggable Genome

### Product images:



WB Suggested Anti-FBXL20 Antibody; Titration:  
1.0 ug/ml; Positive Control: Fetal Brain