

Product datasheet for **TA343032**

SYTL1 Rabbit Polyclonal Antibody

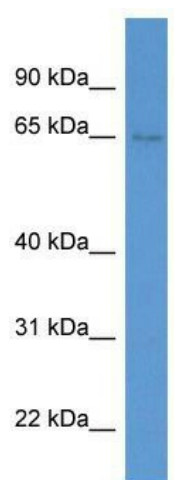
Product data:

Product Type:	Primary Antibodies
Applications:	WB
Recommended Dilution:	WB
Reactivity:	Human
Host:	Rabbit
Isotype:	IgG
Clonality:	Polyclonal
Immunogen:	The immunogen for anti-SYTL1 antibody: synthetic peptide directed towards the N terminal of human SYTL1. Synthetic peptide located within the following region: EAEAAVKEKEEGPEPRLTIDEAPQERLRETEASDPEEASQAQEDPGQGDQ
Formulation:	Liquid. Purified antibody supplied in 1x PBS buffer with 0.09% (w/v) sodium azide and 2% sucrose.
Conjugation:	Unconjugated
Storage:	Store at -20°C as received.
Stability:	Stable for 12 months from date of receipt.
Predicted Protein Size:	61 kDa
Gene Name:	synaptotagmin like 1
Database Link:	NP_116261 Entrez Gene 84958 Human Q8IYJ3
Background:	SYTL1 may play a role in vesicle trafficking. It binds phosphatidylinositol 3,4,5-triphosphate. It acts as a RAB27A effector protein and may play a role in cytotoxic granule exocytosis in lymphocytes.
Synonyms:	JFC1; SLP1
Note:	Immunogen Sequence Homology: Human: 100%



[View online »](#)

Product images:



WB Suggested Anti-SYTL1 Antibody Titration: 0.2-1 ug/ml; ELISA Titer: 1:62500; Positive Control: 721_B cell lysate