

## Product datasheet for **TA343030**

### PRPF38A Rabbit Polyclonal Antibody

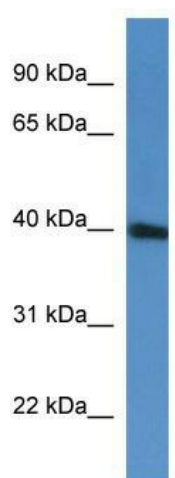
#### Product data:

Product Type:	Primary Antibodies
Applications:	WB
Recommended Dilution:	WB
Reactivity:	Human
Host:	Rabbit
Isotype:	IgG
Clonality:	Polyclonal
Immunogen:	The immunogen for anti-PRPF38A antibody: synthetic peptide directed towards the C terminal of human PRPF38A. Synthetic peptide located within the following region: PRRHRSRSDRRHRSRSKSPGHHRSHRHRSHSKSPERSKSKSHKKSRRGNE
Formulation:	Liquid. Purified antibody supplied in 1x PBS buffer with 0.09% (w/v) sodium azide and 2% sucrose. <i>Note that this product is shipped as lyophilized powder to China customers.</i>
Conjugation:	Unconjugated
Storage:	Store at -20°C as received.
Stability:	Stable for 12 months from date of receipt.
Predicted Protein Size:	37 kDa
Gene Name:	pre-mRNA processing factor 38A
Database Link:	<a href="#">NP_116253</a> <a href="#">Entrez Gene 84950 Human</a> <a href="#">Q8NAV1</a>
Background:	The function of this protein remains unknown.
Synonyms:	Prp38; PRP38A
Note:	Immunogen Sequence Homology: Dog: 100%; Pig: 100%; Rat: 100%; Horse: 100%; Human: 100%; Mouse: 100%; Bovine: 100%; Rabbit: 100%; Guinea pig: 100%; Zebrafish: 93%
Protein Pathways:	Spliceosome



[View online »](#)

## Product images:



WB Suggested Anti-PRPF38A Antibody Titration:  
0.2-1 ug/ml; ELISA Titer: 1:62500; Positive Control:  
Jurkat cell lysate