

Product datasheet for **TA343029**

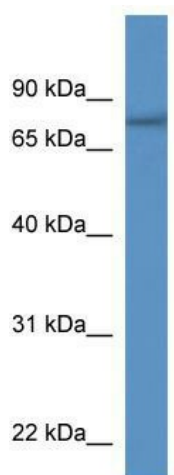
SERAC1 Rabbit Polyclonal Antibody

Product data:

Product Type:	Primary Antibodies
Applications:	WB
Recommended Dilution:	WB
Reactivity:	Human
Host:	Rabbit
Isotype:	IgG
Clonality:	Polyclonal
Immunogen:	The immunogen for anti-SERAC1 antibody: synthetic peptide directed towards the N terminal of human SERAC1. Synthetic peptide located within the following region: KTLIGLARSEESDLRFFLLPPPLPSLKEDSSTEEELRQLLASLPQTELDE
Formulation:	Liquid. Purified antibody supplied in 1x PBS buffer with 0.09% (w/v) sodium azide and 2% sucrose. <i>Note that this product is shipped as lyophilized powder to China customers.</i>
Conjugation:	Unconjugated
Storage:	Store at -20°C as received.
Stability:	Stable for 12 months from date of receipt.
Predicted Protein Size:	74 kDa
Gene Name:	serine active site containing 1
Database Link:	NP_116250 Entrez Gene 84947 Human Q96JX3
Background:	The function of this protein remains unknown.
Synonyms:	FLJ14917; FLJ30544
Note:	Immunogen Sequence Homology: Rat: 100%; Human: 100%; Dog: 93%; Pig: 93%; Mouse: 93%; Bovine: 93%; Rabbit: 93%; Guinea pig: 85%; Horse: 79%



[View online »](#)

Product images:

WB Suggested Anti-SERAC1 Antibody Titration:
0.2-1 ug/ml; ELISA Titer: 1:62500; Positive Control:
Human heart