

Product datasheet for **TA343028**

WDR73 Rabbit Polyclonal Antibody

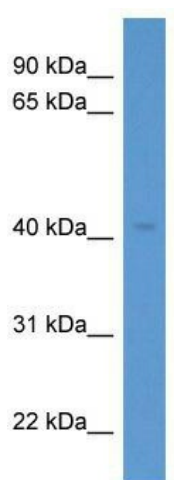
Product data:

Product Type:	Primary Antibodies
Applications:	WB
Recommended Dilution:	WB
Reactivity:	Human
Host:	Rabbit
Isotype:	IgG
Clonality:	Polyclonal
Immunogen:	The immunogen for anti-WDR73 antibody: synthetic peptide directed towards the middle region of human WDR73. Synthetic peptide located within the following region: VVDLESRKTTYTSDVSDSEELSSLQVLDADTFAFCCASGRLGLVDTRQKW
Formulation:	Liquid. Purified antibody supplied in 1x PBS buffer with 0.09% (w/v) sodium azide and 2% sucrose.
Conjugation:	Unconjugated
Storage:	Store at -20°C as received.
Stability:	Stable for 12 months from date of receipt.
Predicted Protein Size:	42 kDa
Gene Name:	WD repeat domain 73
Database Link:	NP_116245 Entrez Gene 84942 Human Q6P4I2
Background:	The function of this protein remains unknown.
Synonyms:	GAMOS; HSPC264
Note:	Immunogen Sequence Homology: Human: 100%; Dog: 86%; Horse: 79%; Rabbit



[View online »](#)

Product images:



WB Suggested Anti-WDR73 Antibody Titration:
0.2-1 ug/ml; ELISA Titer: 1:62500; Positive Control:
Human Liver