

## Product datasheet for **TA343027**

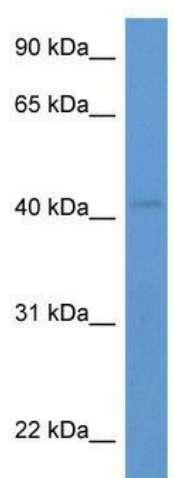
### HSH2D Rabbit Polyclonal Antibody

#### Product data:

Product Type:	Primary Antibodies
Applications:	WB
Recommended Dilution:	WB
Reactivity:	Human
Host:	Rabbit
Isotype:	IgG
Clonality:	Polyclonal
Immunogen:	The immunogen for anti-HSH2D antibody: synthetic peptide directed towards the C terminal of human HSH2D. Synthetic peptide located within the following region: DPCVATSLKSPSQPQAPKDRKVPTRKAERSVSCIEVTPGDRSWHQMVVRA
Formulation:	Liquid. Purified antibody supplied in 1x PBS buffer with 0.09% (w/v) sodium azide and 2% sucrose. <i>Note that this product is shipped as lyophilized powder to China customers.</i>
Conjugation:	Unconjugated
Storage:	Store at -20°C as received.
Stability:	Stable for 12 months from date of receipt.
Predicted Protein Size:	39 kDa
Gene Name:	hematopoietic SH2 domain containing
Database Link:	<a href="#">NP_116244</a> <a href="#">Entrez Gene 84941 Human</a> <a href="#">Q96JZ2</a>
Background:	T-cell activation requires 2 signals: recognition of antigen by the T-cell receptor and a costimulatory signal provided primarily by CD28 in naive T cells. HSH2 is a target of both of these signaling pathways.
Synonyms:	ALX; HSH2
Note:	Immunogen Sequence Homology: Human: 100%; Horse: 82%



[View online »](#)

**Product images:**

WB Suggested Anti-HSH2D Antibody Titration:  
0.2-1 ug/ml; ELISA Titer: 1:62500; Positive Control:  
Human kidney