

## Product datasheet for TA343026

### RAB2B Rabbit Polyclonal Antibody

#### Product data:

Product Type:	Primary Antibodies
Applications:	WB
Recommended Dilution:	WB
Reactivity:	Human
Host:	Rabbit
Isotype:	IgG
Clonality:	Polyclonal
Immunogen:	The immunogen for anti-RAB2B antibody: synthetic peptide directed towards the C terminal of human RAB2B. Synthetic peptide located within the following region: IGNKSDLESRRDVKREEGEAFAREHGLIFMETS AKTACNVVEAFINTAKE
Formulation:	Liquid. Purified antibody supplied in 1x PBS buffer with 0.09% (w/v) sodium azide and 2% sucrose. <i>Note that this product is shipped as lyophilized powder to China customers.</i>
Conjugation:	Unconjugated
Storage:	Store at -20°C as received.
Stability:	Stable for 12 months from date of receipt.
Predicted Protein Size:	24 kDa
Gene Name:	RAB2B, member RAS oncogene family
Database Link:	<a href="#">NP_116235</a> <a href="#">Entrez Gene 84932 Human</a> <a href="#">Q8WUD1</a>
Background:	Members of the Rab protein family are nontransforming monomeric GTP-binding proteins of the Ras superfamily that contain 4 highly conserved regions involved in GTP binding and hydrolysis. Rab proteins are prenylated, membrane-bound proteins involved in vesicular fusion and trafficking.
Synonyms:	FLJ14824

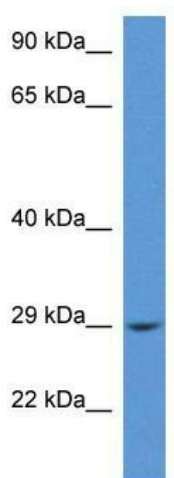


[View online »](#)

**Note:** Immunogen Sequence Homology: Dog: 100%; Pig: 100%; Rat: 100%; Horse: 100%; Human: 100%; Mouse: 100%; Yeast: 100%; Bovine: 100%; Rabbit: 100%; Guinea pig: 100%; Goat: 86%; Zebrafish: 86%

**Protein Families:** Druggable Genome

**Product images:**



WB Suggested Anti-RAB2B Antibody; Titration: 1.0 ug/ml; Positive Control: THP-1 Whole Cell